

# CHTF18 Antibody (monoclonal) (M01)

Mouse monoclonal antibody raised against a partial recombinant CHTF18.

Catalog # AT1532a

## Product Information

---

<b>Application</b>	WB, E
<b>Primary Accession</b>	<a href="#">Q8WVB6</a>
<b>Other Accession</b>	<a href="#">BC018184</a>
<b>Reactivity</b>	Human
<b>Host</b>	mouse
<b>Clonality</b>	monoclonal
<b>Isotype</b>	IgG2a Kappa
<b>Clone Names</b>	1F5
<b>Calculated MW</b>	107383

## Additional Information

---

<b>Gene ID</b>	63922
<b>Other Names</b>	Chromosome transmission fidelity protein 18 homolog, hCTF18, CHL12, CHTF18, C16orf41, CTF18
<b>Target/Specificity</b>	CHTF18 (AAH18184, 886 a.a. ~ 975 a.a) partial recombinant protein with GST tag. MW of the GST tag alone is 26 KDa.
<b>Dilution</b>	WB~~1:500~1000 E~~N/A
<b>Format</b>	Clear, colorless solution in phosphate buffered saline, pH 7.2 .
<b>Storage</b>	Store at -20°C or lower. Aliquot to avoid repeated freezing and thawing.
<b>Precautions</b>	CHTF18 Antibody (monoclonal) (M01) is for research use only and not for use in diagnostic or therapeutic procedures.

## Background

---

CHTF18, CHTF8 (MIM 613202), and DCC1 (DSCC1; MIM 613203) are components of an alternative replication factor C (RFC) (see MIM 600404) complex that loads PCNA (MIM 176740) onto DNA during S phase of the cell cycle (Merkle et al., 2003 [PubMed 12766176]; Bermudez et al., 2003 [PubMed 12930902]).

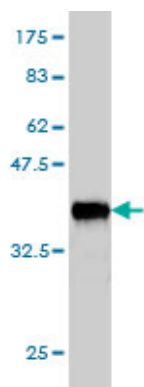
## References

---

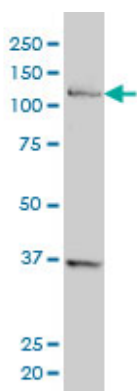
1. Two Different Replication Factor C Proteins, Ctf18 and RFC1, Separately Control PCNA-CRL4Cdt2-Mediated Cdt1 Proteolysis during S Phase and following UV Irradiation. Shiomi Y, Hayashi A, Ishii T, Shinmyozu K, Nakayama J, Sugasawa K, Nishitani H. Mol Cell Biol. 2012 Jun;32(12):2279-88. Epub 2012 Apr 9. 2. Stable

interaction between the human PCNA loader complex Ctf18-RFC and DNA polymerase {epsilon} is mediated by the cohesion specific subunits, Ctf18, Dcc1 and Ctf8. Murakami T, Takano R, Takeo S, Taniguchi R, Ogawa K, Ohashi E, Tsurimoto T. J Biol Chem. 2010 Sep 7. [Epub ahead of print]

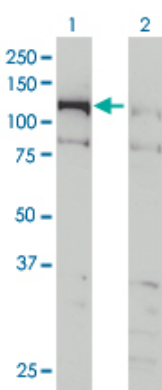
## Images



Antibody Reactive Against Recombinant Protein. Western Blot detection against Immunogen (35.53 KDa) .

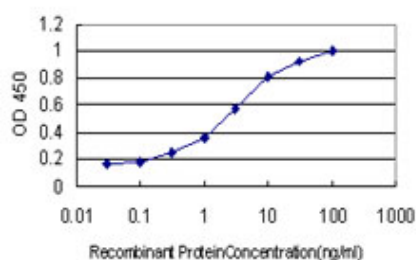


CHTF18 monoclonal antibody (M01), clone 1F5 Western Blot analysis of CHTF18 expression in HeLa (Cat # AT1532a )



Western Blot analysis of CHTF18 expression in transfected 293T cell line by CHTF18 monoclonal antibody (M01), clone 1F5.

Lane 1: CHTF18 transfected lysate(107 KDa).  
Lane 2: Non-transfected lysate.



Detection limit for recombinant GST tagged CHTF18 is approximately 0.1 ng/ml as a capture antibody.

Please note: All products are 'FOR RESEARCH USE ONLY. NOT FOR USE IN DIAGNOSTIC OR THERAPEUTIC PROCEDURES'.