

## CIB1 Antibody (monoclonal) (M01)

Mouse monoclonal antibody raised against a full length recombinant CIB1.

Catalog # AT1537a

### Product Information

---

<b>Application</b>	WB, IHC, IF
<b>Primary Accession</b>	<a href="#">Q99828</a>
<b>Other Accession</b>	<a href="#">BC000846</a>
<b>Reactivity</b>	Human
<b>Host</b>	mouse
<b>Clonality</b>	monoclonal
<b>Isotype</b>	IgG1 Kappa
<b>Clone Names</b>	4D2-3A8
<b>Calculated MW</b>	21703

### Additional Information

---

<b>Gene ID</b>	10519
<b>Other Names</b>	Calcium and integrin-binding protein 1, CIB, Calcium- and integrin-binding protein, CIBP, Calmyrin, DNA-PKcs-interacting protein, Kinase-interacting protein, KIP, SNK-interacting protein 2-28, SIP2-28, CIB1, CIB, KIP, PRKDCIP
<b>Target/Specificity</b>	CIB1 (AAH00846, 1 a.a. ~ 191 a.a) full-length recombinant protein with GST tag. MW of the GST tag alone is 26 KDa.
<b>Dilution</b>	WB~~1:500~1000 IHC~~1:100~500 IF~~1:50~200
<b>Format</b>	Clear, colorless solution in phosphate buffered saline, pH 7.2 .
<b>Storage</b>	Store at -20°C or lower. Aliquot to avoid repeated freezing and thawing.
<b>Precautions</b>	CIB1 Antibody (monoclonal) (M01) is for research use only and not for use in diagnostic or therapeutic procedures.

### Background

---

The protein encoded by this gene is a member of the calcium-binding protein family. The specific function of this protein has not yet been determined; however this protein is known to interact with DNA-dependent protein kinase and may play a role in kinase-phosphatase regulation of DNA end joining. This protein also interacts with integrin alpha(IIB)beta(3), which may implicate this protein as a regulatory molecule for alpha(IIB)beta(3).

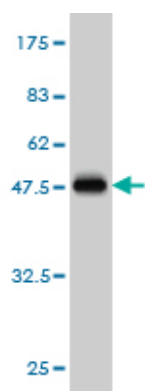
### References

---

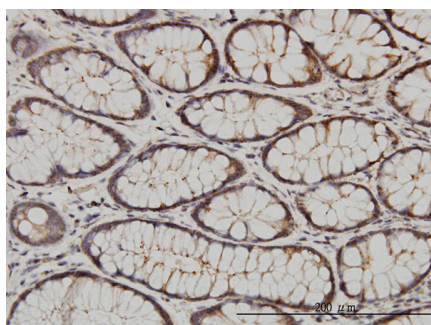


Variation at the NFATC2 Locus Increases the Risk of Thiazolinedinedione-Induced Edema in the Diabetes REduction Assessment with ramipril and rosiglitazone Medication (DREAM) Study. Bailey SD, et al. Diabetes Care, 2010 Jul 13. PMID 20628086. Gene-centric association signals for lipids and apolipoproteins identified via the HumanCVD BeadChip. Talmud PJ, et al. Am J Hum Genet, 2009 Nov. PMID 19913121. Translocation of sphingosine kinase 1 to the plasma membrane is mediated by calcium- and integrin-binding protein 1. Jarman KE, et al. J Biol Chem, 2010 Jan 1. PMID 19854831. Auxiliary Ca<sup>2+</sup> binding sites can influence the structure of CIB1. Yamniuk AP, et al. Protein Sci, 2009 May. PMID 19388079. Characterization of calcium- and integrin-binding protein 1 (CIB1) knockout platelets: potential compensation by CIB family members. Denofrio JC, et al. Thromb Haemost, 2008 Nov. PMID 18989529.

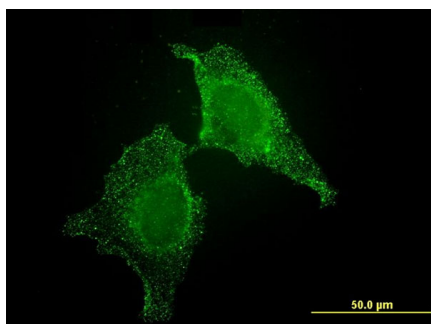
## Images



Antibody Reactive Against Recombinant Protein. Western Blot detection against Immunogen (46.75 KDa) .



Immunoperoxidase of monoclonal antibody to CIB1 on formalin-fixed paraffin-embedded human colon. [antibody concentration 3 ug/ml]



Immunofluorescence of monoclonal antibody to CIB1 on HeLa cell . [antibody concentration 10 ug/ml]

Please note: All products are 'FOR RESEARCH USE ONLY. NOT FOR USE IN DIAGNOSTIC OR THERAPEUTIC PROCEDURES'.