

CKS2 Antibody (monoclonal) (M01)

Mouse monoclonal antibody raised against a full length recombinant CKS2.

Catalog # AT1546a

Product Information

| | |
|--------------------------|--------------------------|
| Application | WB, IF, E |
| Primary Accession | P33552 |
| Other Accession | BC006458 |
| Reactivity | Human |
| Host | mouse |
| Clonality | monoclonal |
| Isotype | IgG2b kappa |
| Clone Names | 2H5-2C4 |
| Calculated MW | 9860 |

Additional Information

| | |
|---------------------------|--|
| Gene ID | 1164 |
| Other Names | Cyclin-dependent kinases regulatory subunit 2, CKS-2, CKS2 |
| Target/Specificity | CKS2 (AAH06458, 1 a.a. ~ 79 a.a) full-length recombinant protein with GST tag. MW of the GST tag alone is 26 KDa. |
| Dilution | WB~~1:500~1000 IF~~1:50~200 E~~N/A |
| Format | Clear, colorless solution in phosphate buffered saline, pH 7.2 . |
| Storage | Store at -20°C or lower. Aliquot to avoid repeated freezing and thawing. |
| Precautions | CKS2 Antibody (monoclonal) (M01) is for research use only and not for use in diagnostic or therapeutic procedures. |

Background

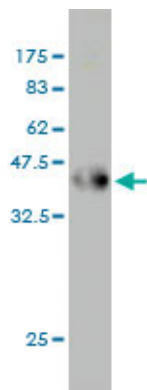
CKS2 protein binds to the catalytic subunit of the cyclin dependent kinases and is essential for their biological function. The CKS2 mRNA is found to be expressed in different patterns through the cell cycle in HeLa cells, which reflects specialized role for the encoded protein.

References

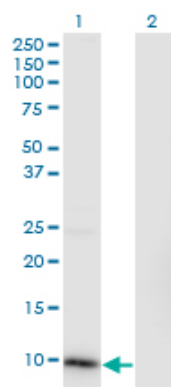
Clinical significance and expression of cyclin kinase subunits 1 and 2 in hepatocellular carcinoma. Shen DY, et al. Liver Int, 2010 Jan. PMID 19845855. Upregulation of the cyclin kinase subunit CKS2 increases cell proliferation rate in gastric cancer. Kang MA, et al. J Cancer Res Clin Oncol, 2009 Jun. PMID 19034516. Cyclin-dependent kinase-associated proteins Cks1 and Cks2 are essential during early

embryogenesis and for cell cycle progression in somatic cells. Martinsson-Ahlz?n HS, et al. Mol Cell Biol, 2008 Sep. PMID 18625720. Aberrant expression of Cks1 and Cks2 contributes to prostate tumorigenesis by promoting proliferation and inhibiting programmed cell death. Lan Y, et al. Int J Cancer, 2008 Aug 1. PMID 18498131. Exquisite sensitivity of TP53 mutant and basal breast cancers to a dose-dense epirubicin-cyclophosphamide regimen. Bertheau P, et al. PLoS Med, 2007 Mar. PMID 17388661.

Images

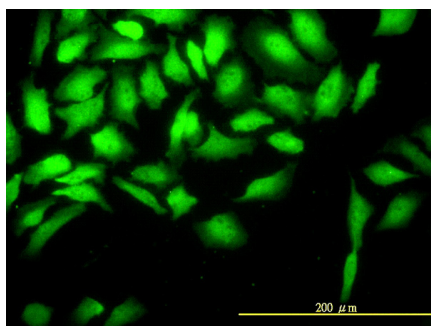


Antibody Reactive Against Recombinant Protein. Western Blot detection against Immunogen (34.43 kDa) .

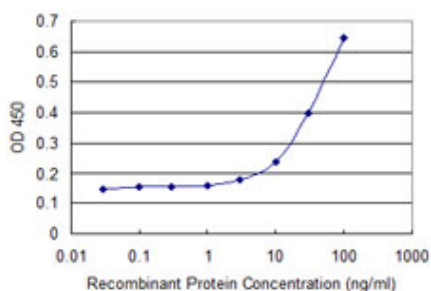


Western Blot analysis of CKS2 expression in transfected 293T cell line by CKS2 monoclonal antibody (M01), clone 2H5-2C4.

Lane 1: CKS2 transfected lysate (9.9 kDa).
Lane 2: Non-transfected lysate.



Immunofluorescence of monoclonal antibody to CKS2 on HeLa cell. [antibody concentration 10 μg/ml]



Detection limit for recombinant GST tagged CKS2 is approximately 3 ng/ml as a capture antibody.

Please note: All products are 'FOR RESEARCH USE ONLY. NOT FOR USE IN DIAGNOSTIC OR THERAPEUTIC PROCEDURES'.