

CKS2 Antibody (monoclonal) (M02)

Mouse monoclonal antibody raised against a full length recombinant CKS2.

Catalog # AT1547a

Product Information

Application	WB, E
Primary Accession	P33552
Other Accession	BC006458
Reactivity	Human
Host	mouse
Clonality	monoclonal
Isotype	IgG2b Kappa
Clone Names	2G12-2A5
Calculated MW	9860

Additional Information

Gene ID	1164
Other Names	Cyclin-dependent kinases regulatory subunit 2, CKS-2, CKS2
Target/Specificity	CKS2 (AAH06458, 1 a.a. ~ 79 a.a) full-length recombinant protein with GST tag. MW of the GST tag alone is 26 KDa.
Dilution	WB~~1:500~1000 E~~N/A
Format	Clear, colorless solution in phosphate buffered saline, pH 7.2 .
Storage	Store at -20°C or lower. Aliquot to avoid repeated freezing and thawing.
Precautions	CKS2 Antibody (monoclonal) (M02) is for research use only and not for use in diagnostic or therapeutic procedures.

Background

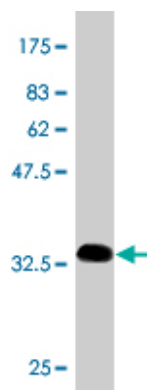
CKS2 protein binds to the catalytic subunit of the cyclin dependent kinases and is essential for their biological function. The CKS2 mRNA is found to be expressed in different patterns through the cell cycle in HeLa cells, which reflects specialized role for the encoded protein.

References

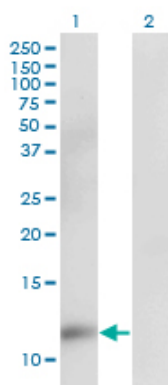
Clinical significance and expression of cyclin kinase subunits 1 and 2 in hepatocellular carcinoma. Shen DY, et al. Liver Int, 2010 Jan. PMID 19845855. Upregulation of the cyclin kinase subunit CKS2 increases cell proliferation rate in gastric cancer. Kang MA, et al. J Cancer Res Clin Oncol, 2009 Jun. PMID 19034516. Cyclin-dependent kinase-associated proteins Cks1 and Cks2 are essential during early

embryogenesis and for cell cycle progression in somatic cells. Martinsson-Ahlzén HS, et al. Mol Cell Biol, 2008 Sep. PMID 18625720. Aberrant expression of Cks1 and Cks2 contributes to prostate tumorigenesis by promoting proliferation and inhibiting programmed cell death. Lan Y, et al. Int J Cancer, 2008 Aug 1. PMID 18498131. Exquisite sensitivity of TP53 mutant and basal breast cancers to a dose-dense epirubicin-cyclophosphamide regimen. Bertheau P, et al. PLoS Med, 2007 Mar. PMID 17388661.

Images

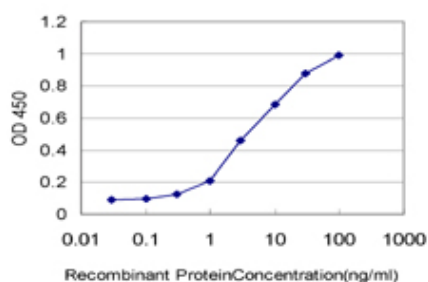


Antibody Reactive Against Recombinant Protein. Western Blot detection against Immunogen (34.43 KDa) .



Western Blot analysis of CKS2 expression in transfected 293T cell line by CKS2 monoclonal antibody (M02), clone 2G12-2A5.

Lane 1: CKS2 transfected lysate (9.9 KDa).
Lane 2: Non-transfected lysate.



Detection limit for recombinant GST tagged CKS2 is approximately 0.1 ng/ml as a capture antibody.

Please note: All products are 'FOR RESEARCH USE ONLY. NOT FOR USE IN DIAGNOSTIC OR THERAPEUTIC PROCEDURES'.