

CLEC2D Antibody (monoclonal) (M01)

Mouse monoclonal antibody raised against a full length recombinant CLEC2D.

Catalog # AT1555a

Product Information

| | |
|--------------------------|--------------------------|
| Application | WB, IHC, E |
| Primary Accession | Q9UHP7 |
| Other Accession | BC019883 |
| Reactivity | Human |
| Host | mouse |
| Clonality | monoclonal |
| Isotype | IgG1 Kappa |
| Clone Names | 4C7 |
| Calculated MW | 21849 |

Additional Information

| | |
|---------------------------|---|
| Gene ID | 29121 |
| Other Names | C-type lectin domain family 2 member D, Lectin-like NK cell receptor, Lectin-like transcript 1, LLT-1, Osteoclast inhibitory lectin, CLEC2D, CLAX, LLT1, OCIL |
| Target/Specificity | CLEC2D (AAH19883, 1 a.a. ~ 154 a.a) full-length recombinant protein with GST tag. MW of the GST tag alone is 26 KDa. |
| Dilution | WB~~1:500~1000 IHC~~1:100~500 E~~N/A |
| Format | Clear, colorless solution in phosphate buffered saline, pH 7.2 . |
| Storage | Store at -20°C or lower. Aliquot to avoid repeated freezing and thawing. |
| Precautions | CLEC2D Antibody (monoclonal) (M01) is for research use only and not for use in diagnostic or therapeutic procedures. |

Background

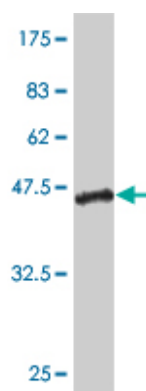
This gene encodes a member of the natural killer cell receptor C-type lectin family. The encoded protein inhibits osteoclast formation and contains a transmembrane domain near the N-terminus as well as the C-type lectin-like extracellular domain. Several alternatively spliced transcript variants have been identified, but the full-length nature of every transcript has not been defined.

References

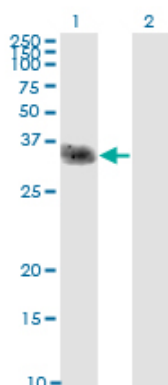
1. Induction of LLT1 cell surface expression by pathogens and IFN- γ contributes to modulate immune

responses. Germain C, Meier A, Jensen T, Knapnougél P, Poupon G, Lazzari A, Neisig A, Hakansson K, Dong T, Wagtmann N, Galsgaard ED, Spee P, Braud VM. *J Biol Chem*. 2011 Sep 19;286(39):33811-21. Characterization of Alternatively Spliced Transcript Variants of CLEC2D Gene. Germain C, Bihl F, Zahn S, Poupon G, Dumaurier MJ, Rampanarivo HH, Padkjar SB, Spee P, Braud VM. *J Biol Chem*. 2010 Nov 12;285(46):36207-15. Epub 2010 Sep 14. Functional Consequences of Interactions between Human NKR-P1A and Its Ligand LLT1 Expressed on Activated Dendritic Cells and B Cells. Rosen DB, Cao W, Avery DT, Tangye SG, Liu YJ, Houchins JP, Lanier LL. *J Immunol*. 2008 May 15;180(10):6508-17. Malignant Glioma Cells Counteract Antitumor Immune Responses through Expression of Lectin-Like Transcript-1. Roth P, Mittelbronn M, Wick W, Meyermann R, Tatagiba M, Weller M. *Cancer Res*. 2007 Apr 15;67(8):3540-4.

Images

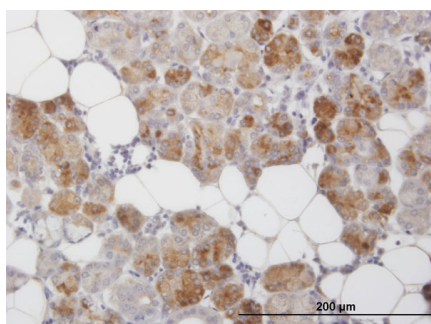


Antibody Reactive Against Recombinant Protein. Western Blot detection against Immunogen (42.68 KDa) .

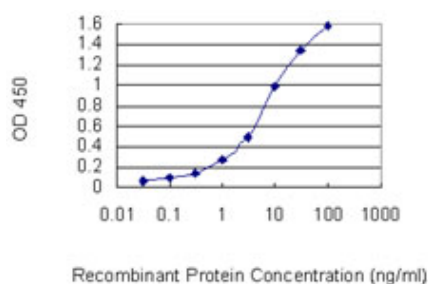


Western Blot analysis of CLEC2D expression in transfected 293T cell line by CLEC2D monoclonal antibody (M01), clone 4C7.

Lane 1: CLEC2D transfected lysate (21.8 KDa).
Lane 2: Non-transfected lysate.



Immunoperoxidase of monoclonal antibody to CLEC2D on formalin-fixed paraffin-embedded human salivary gland. [antibody concentration 3 ug/ml]



Detection limit for recombinant GST tagged CLEC2D is 0.1 ng/ml as a capture antibody.

Please note: All products are 'FOR RESEARCH USE ONLY. NOT FOR USE IN DIAGNOSTIC OR THERAPEUTIC PROCEDURES'.