

CLIC3 Antibody (monoclonal) (M02)

Mouse monoclonal antibody raised against a partial recombinant CLIC3.

Catalog # AT1557a

Product Information

Application	WB, IHC, IF, IP, E
Primary Accession	O95833
Other Accession	NM_004669
Reactivity	Human
Host	mouse
Clonality	monoclonal
Isotype	IgG2a Kappa
Clone Names	3F8
Calculated MW	26648

Additional Information

Gene ID	9022
Other Names	Chloride intracellular channel protein 3, CLIC3
Target/Specificity	CLIC3 (NP_004660, 137 a.a. ~ 236 a.a) partial recombinant protein with GST tag. MW of the GST tag alone is 26 KDa.
Dilution	WB~~1:500~1000 IHC~~1:100~500 IF~~1:50~200 IP~~N/A E~~N/A
Format	Clear, colorless solution in phosphate buffered saline, pH 7.2 .
Storage	Store at -20°C or lower. Aliquot to avoid repeated freezing and thawing.
Precautions	CLIC3 Antibody (monoclonal) (M02) is for research use only and not for use in diagnostic or therapeutic procedures.

Background

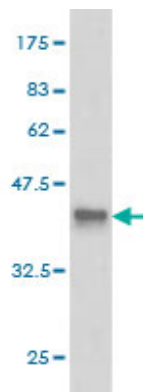
Chloride channels are a diverse group of proteins that regulate fundamental cellular processes including stabilization of cell membrane potential, transepithelial transport, maintenance of intracellular pH, and regulation of cell volume. Chloride intracellular channel 3 is a member of the p64 family and is predominantly localized in the nucleus and stimulates chloride ion channel activity. In addition, this protein may participate in cellular growth control, based on its association with ERK7, a member of the MAP kinase family.

References

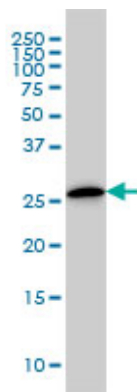
Structure of human CLIC3 at 2 Å resolution. Littler DR, et al. Proteins, 2010 May 1. PMID 20146363. Toward a

confocal subcellular atlas of the human proteome. Barbe L, et al. Mol Cell Proteomics, 2008 Mar. PMID 18029348. Expression and cellular localisation of chloride intracellular channel 3 in human placenta and fetal membranes. Money TT, et al. Placenta, 2007 May-Jun. PMID 17027078. The status, quality, and expansion of the NIH full-length cDNA project: the Mammalian Gene Collection (MGC). Gerhard DS, et al. Genome Res, 2004 Oct. PMID 15489334. Generation and initial analysis of more than 15,000 full-length human and mouse cDNA sequences. Strausberg RL, et al. Proc Natl Acad Sci U S A, 2002 Dec 24. PMID 12477932.

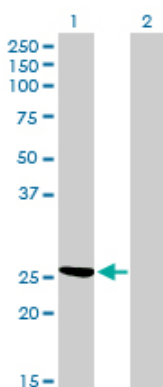
Images



Antibody Reactive Against Recombinant Protein. Western Blot detection against Immunogen (36.74 kDa) .

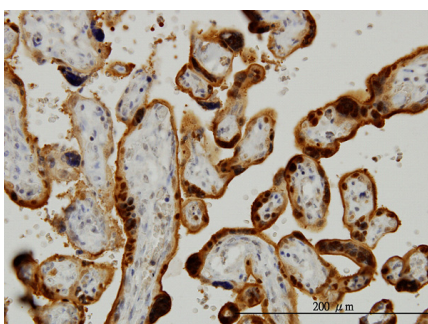


CLIC3 monoclonal antibody (M02), clone 3F8 Western Blot analysis of CLIC3 expression in A-431 ((Cat # AT1557a)

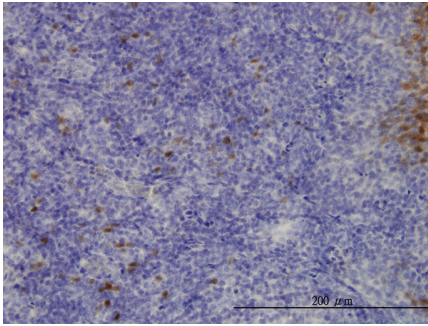


Western Blot analysis of CLIC3 expression in transfected 293T cell line by CLIC3 monoclonal antibody (M02), clone 3F8.

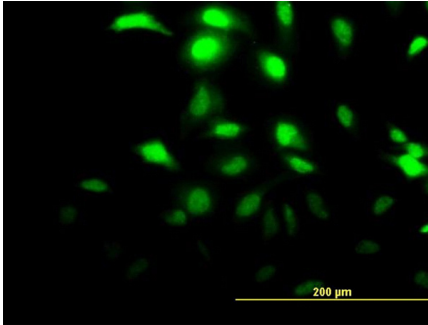
Lane 1: CLIC3 transfected lysate (26.6 kDa).
Lane 2: Non-transfected lysate.



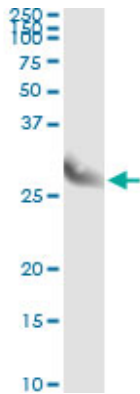
Immunoperoxidase of monoclonal antibody to CLIC3 on formalin-fixed paraffin-embedded human placenta. [antibody concentration 3 ug/ml]



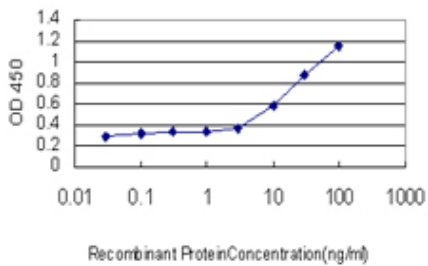
Immunoperoxidase of monoclonal antibody to CLIC3 on formalin-fixed paraffin-embedded human tonsil. [antibody concentration 3 ug/ml]



Immunofluorescence of monoclonal antibody to CLIC3 on HeLa cell. [antibody concentration 15 ug/ml]



Immunoprecipitation of CLIC3 transfected lysate using anti-CLIC3 monoclonal antibody and Protein A Magnetic Bead ([U0007](#)), and immunoblotted with CLIC3 MaxPab rabbit polyclonal antibody.



Detection limit for recombinant GST tagged CLIC3 is approximately 0.1ng/ml as a capture antibody.

Please note: All products are 'FOR RESEARCH USE ONLY. NOT FOR USE IN DIAGNOSTIC OR THERAPEUTIC PROCEDURES'.