

## CLK3 Antibody (monoclonal) (M04)

Mouse monoclonal antibody raised against a partial recombinant CLK3.

Catalog # AT1558a

### Product Information

---

<b>Application</b>	WB, IHC, IF
<b>Primary Accession</b>	<a href="#">P49761</a>
<b>Other Accession</b>	<a href="#">BC002555</a>
<b>Reactivity</b>	Human
<b>Host</b>	mouse
<b>Clonality</b>	monoclonal
<b>Isotype</b>	IgG2b Kappa
<b>Clone Names</b>	5B2
<b>Calculated MW</b>	58588

### Additional Information

---

<b>Gene ID</b>	1198
<b>Other Names</b>	Dual specificity protein kinase CLK3, CDC-like kinase 3, CLK3
<b>Target/Specificity</b>	CLK3 (AAH02555, 36 a.a. ~ 136 a.a) partial recombinant protein with GST tag. MW of the GST tag alone is 26 KDa.
<b>Dilution</b>	WB~~1:500~1000 IHC~~1:100~500 IF~~1:50~200
<b>Format</b>	Clear, colorless solution in phosphate buffered saline, pH 7.2 .
<b>Storage</b>	Store at -20°C or lower. Aliquot to avoid repeated freezing and thawing.
<b>Precautions</b>	CLK3 Antibody (monoclonal) (M04) is for research use only and not for use in diagnostic or therapeutic procedures.

### Background

---

This gene encodes a protein belonging to the serine/threonine type protein kinase family. This protein is a nuclear dual-specificity kinase that regulates the intranuclear distribution of the serine/arginine-rich (SR) family of splicing factors. Two transcript variants encoding different isoforms have been found for this gene. Related pseudogenes are located on chromosomes 1 and 9.

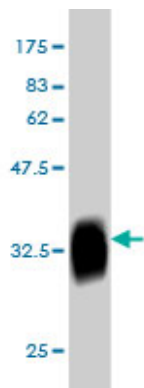
### References

---

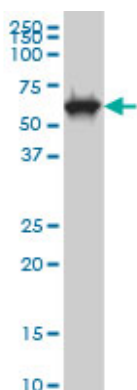
[Expression of cell cycle molecules in human azoospermic testes] Yang B, et al. Xi Bao Yu Fen Zi Mian Yi Xue Za Zhi, 2009 May. PMID 19426592. Cdc2-like kinases and DNA topoisomerase I regulate alternative splicing of tissue factor in human endothelial cells. Eisenreich A, et al. Circ Res, 2009 Mar 13. PMID

19168442. Proteomics analysis of protein kinases by target class-selective prefractionation and tandem mass spectrometry. Wissing J, et al. Mol Cell Proteomics, 2007 Mar. PMID 17192257. Global, in vivo, and site-specific phosphorylation dynamics in signaling networks. Olsen JV, et al. Cell, 2006 Nov 3. PMID 17081983. Towards a proteome-scale map of the human protein-protein interaction network. Rual JF, et al. Nature, 2005 Oct 20. PMID 16189514.

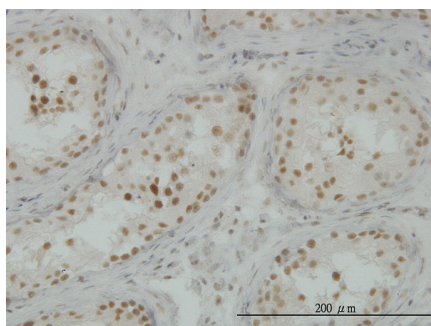
## Images



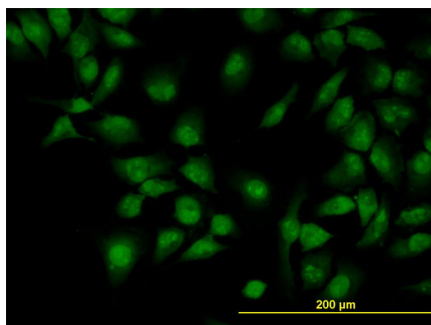
Antibody Reactive Against Recombinant Protein. Western Blot detection against Immunogen (36.74 kDa) .



CLK3 monoclonal antibody (M04), clone 5B2 Western Blot analysis of CLK3 expression in MCF-7 (Cat # AT1558a )



Immunoperoxidase of monoclonal antibody to CLK3 on formalin-fixed paraffin-embedded human testis. [antibody concentration 1.5 ug/ml]



Immunofluorescence of monoclonal antibody to CLK3 on HeLa cell. [antibody concentration 10 ug/ml]

Please note: All products are 'FOR RESEARCH USE ONLY. NOT FOR USE IN DIAGNOSTIC OR THERAPEUTIC PROCEDURES'.