

CLK3 Antibody (monoclonal) (M05)

Mouse monoclonal antibody raised against a partial recombinant CLK3.

Catalog # AT1559a

Product Information

Application	WB, IHC, IF
Primary Accession	P49761
Other Accession	BC002555
Reactivity	Human
Host	mouse
Clonality	monoclonal
Isotype	IgG2b Kappa
Clone Names	1F10
Calculated MW	58588

Additional Information

Gene ID	1198
Other Names	Dual specificity protein kinase CLK3, CDC-like kinase 3, CLK3
Target/Specificity	CLK3 (AAH02555, 36 a.a. ~ 136 a.a) partial recombinant protein with GST tag. MW of the GST tag alone is 26 KDa.
Dilution	WB~~1:500~1000 IHC~~1:100~500 IF~~1:50~200
Format	Clear, colorless solution in phosphate buffered saline, pH 7.2 .
Storage	Store at -20°C or lower. Aliquot to avoid repeated freezing and thawing.
Precautions	CLK3 Antibody (monoclonal) (M05) is for research use only and not for use in diagnostic or therapeutic procedures.

Background

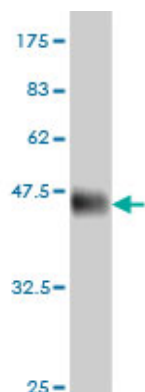
This gene encodes a protein belonging to the serine/threonine type protein kinase family. This protein is a nuclear dual-specificity kinase that regulates the intranuclear distribution of the serine/arginine-rich (SR) family of splicing factors. Two transcript variants encoding different isoforms have been found for this gene. Related pseudogenes are located on chromosomes 1 and 9.

References

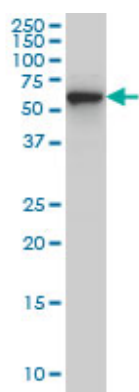
[Expression of cell cycle molecules in human azoospermic testes] Yang B, et al. Xi Bao Yu Fen Zi Mian Yi Xue Za Zhi, 2009 May. PMID 19426592. Cdc2-like kinases and DNA topoisomerase I regulate alternative splicing of tissue factor in human endothelial cells. Eisenreich A, et al. Circ Res, 2009 Mar 13. PMID

19168442. Proteomics analysis of protein kinases by target class-selective prefractionation and tandem mass spectrometry. Wissing J, et al. Mol Cell Proteomics, 2007 Mar. PMID 17192257. Global, in vivo, and site-specific phosphorylation dynamics in signaling networks. Olsen JV, et al. Cell, 2006 Nov 3. PMID 17081983. Towards a proteome-scale map of the human protein-protein interaction network. Rual JF, et al. Nature, 2005 Oct 20. PMID 16189514.

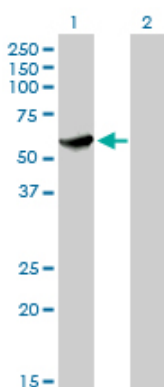
Images



Antibody Reactive Against Recombinant Protein. Western Blot detection against Immunogen (36.74 kDa) .

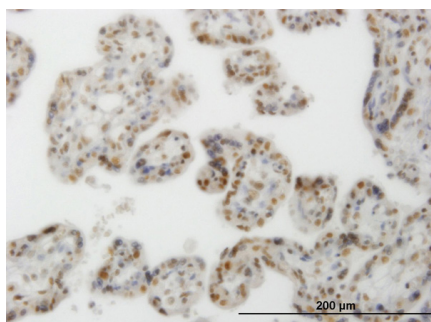


CLK3 monoclonal antibody (M05), clone 1F10. Western Blot analysis of CLK3 expression in Hela S3 NE (Cat # AT1559a)



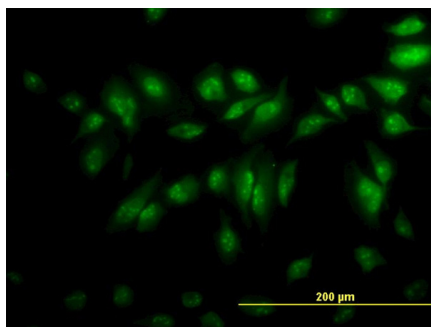
Western Blot analysis of CLK3 expression in transfected 293T cell line by CLK3 monoclonal antibody (M05), clone 1F10.

Lane 1: CLK3 transfected lysate (58.6 kDa).
Lane 2: Non-transfected lysate.

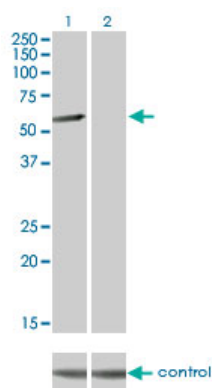


Immunoperoxidase of monoclonal antibody to CLK3 on formalin-fixed paraffin-embedded human placenta. [antibody concentration 0.5 ug/ml]

Immunofluorescence of monoclonal antibody to CLK3 on



HeLa cell. [antibody concentration 8 ug/ml]



Western blot analysis of CLK3 over-expressed 293 cell line, cotransfected with CLK3 Validated Chimera RNAi (Cat # AT1559a)

Please note: All products are 'FOR RESEARCH USE ONLY. NOT FOR USE IN DIAGNOSTIC OR THERAPEUTIC PROCEDURES'.