

## CLPP Antibody (monoclonal) (M01)

Mouse monoclonal antibody raised against a partial recombinant CLPP.

Catalog # AT1562a

### Product Information

---

<b>Application</b>	WB, IHC, E
<b>Primary Accession</b>	<a href="#">Q16740</a>
<b>Other Accession</b>	<a href="#">NM_006012</a>
<b>Reactivity</b>	Human, Rat
<b>Host</b>	mouse
<b>Clonality</b>	monoclonal
<b>Isotype</b>	IgG2b Kappa
<b>Clone Names</b>	3E3
<b>Calculated MW</b>	30180

### Additional Information

---

<b>Gene ID</b>	8192
<b>Other Names</b>	ATP-dependent Clp protease proteolytic subunit, mitochondrial, Endopeptidase Clp, CLPP
<b>Target/Specificity</b>	CLPP (NP_006003, 178 a.a. ~ 277 a.a) partial recombinant protein with GST tag. MW of the GST tag alone is 26 KDa.
<b>Dilution</b>	WB~~1:500~1000 IHC~~1:100~500 E~~N/A
<b>Format</b>	Clear, colorless solution in phosphate buffered saline, pH 7.2 .
<b>Storage</b>	Store at -20°C or lower. Aliquot to avoid repeated freezing and thawing.
<b>Precautions</b>	CLPP Antibody (monoclonal) (M01) is for research use only and not for use in diagnostic or therapeutic procedures.

### Background

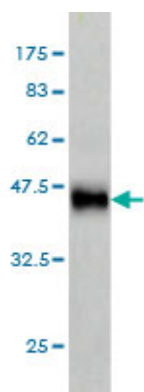
---

The protein encoded by this gene belongs to the peptidase family S14 and hydrolyzes proteins into small peptides in the presence of ATP and magnesium. The protein is transported into mitochondrial matrix and is associated with the inner mitochondrial membrane.

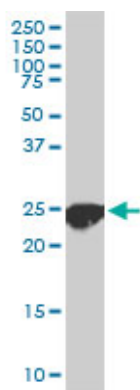
### References

---

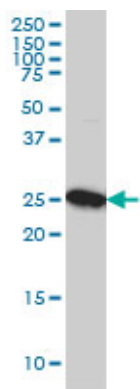
1.Diphenylarsinic acid promotes degradation of glutaminase C by mitochondrial Lon protease.Kita K, Suzuki T, Ochi T.J Biol Chem. 2012 Apr 5. [Epub ahead of print]



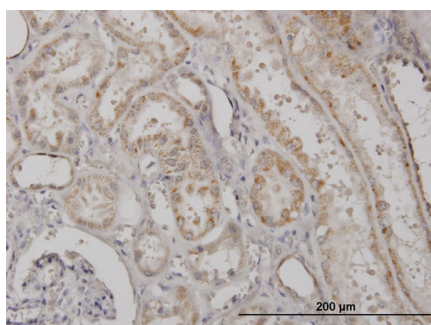
Antibody Reactive Against Recombinant Protein. Western Blot detection against Immunogen (36.74 KDa) .



CLPP monoclonal antibody (M01), clone 3E2. Western Blot analysis of CLPP expression in PC-12 ( (Cat # AT1562a )

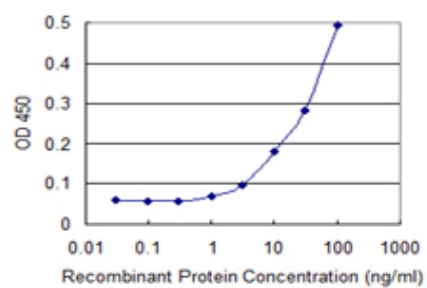


CLPP monoclonal antibody (M01), clone 3E2 Western Blot analysis of CLPP expression in A-431 ( (Cat # AT1562a )



Immunoperoxidase of monoclonal antibody to CLPP on formalin-fixed paraffin-embedded human kidney. [antibody concentration 1 ug/ml]

Detection limit for recombinant GST tagged CLPP is 1 ng/ml as a capture antibody.



Please note: All products are 'FOR RESEARCH USE ONLY. NOT FOR USE IN DIAGNOSTIC OR THERAPEUTIC PROCEDURES'.