

CNAP1 Antibody (monoclonal) (M01)

Mouse monoclonal antibody raised against a partial recombinant CNAP1.

Catalog # AT1568a

Product Information

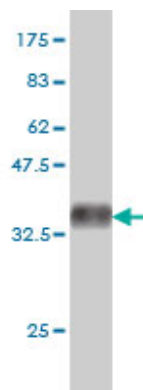
Application	WB, IHC, IF, E
Primary Accession	Q15021
Other Accession	BC028182
Reactivity	Human
Host	mouse
Clonality	monoclonal
Isotype	IgG1 Kappa
Clone Names	4C12
Calculated MW	157182

Additional Information

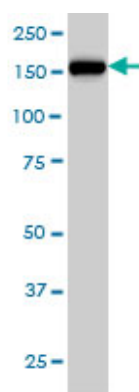
Gene ID	9918
Other Names	Condensin complex subunit 1, Chromosome condensation-related SMC-associated protein 1, Chromosome-associated protein D2, hCAP-D2, Non-SMC condensin I complex subunit D2, XCAP-D2 homolog, NCAPD2, CAPD2, CNAP1, KIAA0159
Target/Specificity	CNAP1 (AAH28182, 1240 a.a. ~ 1339 a.a) partial recombinant protein with GST tag. MW of the GST tag alone is 26 KDa.
Dilution	WB~~1:500~1000 IHC~~1:100~500 IF~~1:50~200 E~~N/A
Format	Clear, colorless solution in phosphate buffered saline, pH 7.2 .
Storage	Store at -20°C or lower. Aliquot to avoid repeated freezing and thawing.
Precautions	CNAP1 Antibody (monoclonal) (M01) is for research use only and not for use in diagnostic or therapeutic procedures.

References

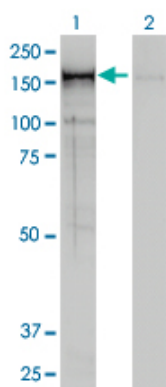
Centrosome-related genes, genetic variation, and risk of breast cancer. Olson JE, et al. Breast Cancer Res Treat, 2010 May 28. PMID 20508983. Further examination of the candidate genes in chromosome 12p13 locus for late-onset Alzheimer disease. Lee JH, et al. Neurogenetics, 2008 May. PMID 18340469. Global, in vivo, and site-specific phosphorylation dynamics in signaling networks. Olsen JV, et al. Cell, 2006 Nov 3. PMID 17081983. A probability-based approach for high-throughput protein phosphorylation analysis and site localization. Beausoleil SA, et al. Nat Biotechnol, 2006 Oct. PMID 16964243. Phosphoproteome analysis of the human mitotic spindle. Nousiainen M, et al. Proc Natl Acad Sci U S A, 2006 Apr 4. PMID 16565220.



Antibody Reactive Against Recombinant Protein. Western Blot detection against Immunogen (36.63 KDa) .

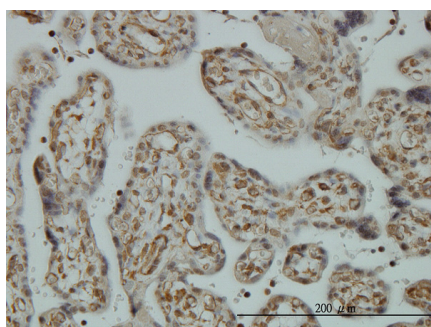


CNAP1 monoclonal antibody (M01), clone 4C12 Western Blot analysis of CNAP1 expression in HeLa ((Cat # AT1568a)



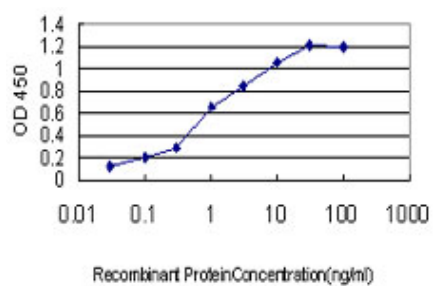
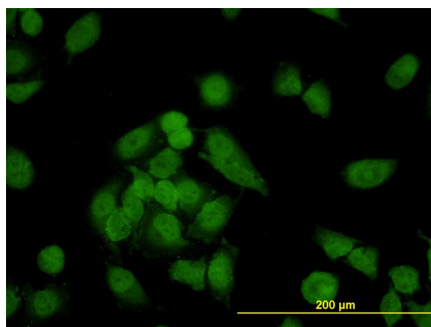
Western Blot analysis of CNAP1 expression in transfected 293T cell line by CNAP1 monoclonal antibody (M01), clone 4C12.

Lane 1: CNAP1 transfected lysate(157 KDa).
Lane 2: Non-transfected lysate.



Immunoperoxidase of monoclonal antibody to CNAP1 on formalin-fixed paraffin-embedded human placenta. [antibody concentration 3 ug/ml]

Immunofluorescence of monoclonal antibody to CNAP1 on HeLa cell. [antibody concentration 10 ug/ml]



Detection limit for recombinant GST tagged CNAP1 is approximately 0.1ng/ml as a capture antibody.

Please note: All products are 'FOR RESEARCH USE ONLY. NOT FOR USE IN DIAGNOSTIC OR THERAPEUTIC PROCEDURES'.