

CNDP2 Antibody (monoclonal) (M09)

Mouse monoclonal antibody raised against a partial recombinant CNDP2.

Catalog # AT1569a

Product Information

Application	WB, E
Primary Accession	Q96KP4
Other Accession	NM_018235
Reactivity	Human
Host	Mouse
Clonality	monoclonal
Isotype	IgG2a Kappa
Clone Names	1B1
Calculated MW	52878

Additional Information

Gene ID	55748
Other Names	Cytosolic non-specific dipeptidase, CNDP dipeptidase 2, Glutamate carboxypeptidase-like protein 1, Peptidase A, CNDP2, CN2, CPGL, PEPA
Target/Specificity	CNDP2 (NP_060705, 191 a.a. ~ 300 a.a) partial recombinant protein with GST tag. MW of the GST tag alone is 26 KDa.
Dilution	WB~~1:500~1000 E~~N/A
Format	Clear, colorless solution in phosphate buffered saline, pH 7.2 .
Storage	Store at -20°C or lower. Aliquot to avoid repeated freezing and thawing.
Precautions	CNDP2 Antibody (monoclonal) (M09) is for research use only and not for use in diagnostic or therapeutic procedures.

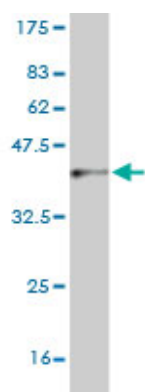
Background

CNDP2, also known as tissue carnosinase and peptidase A (EC 3.4.13.18), is a nonspecific dipeptidase rather than a selective carnosinase (Teufel et al., 2003 [PubMed 12473676]).

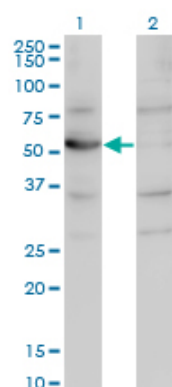
References

1.Laser Microdissection and Two-Dimensional Difference Gel Electrophoresis Reveal the Role of a Novel Macrophage-Capping Protein in Lymph Node Metastasis in Gastric Cancer.Ichikawa H, Kanda T, Kosugi SI, Kawachi Y, Sasaki H, Wakai T, Kondo TJ Proteome Res. 2013 Jul 9.2.Proteomic profiling of the substantia nigra demonstrates CNDP2 overexpression in Parkinson's disease.Licker V, Cote M, Lobrinus JA, Rodrigo N, Kovari

Images

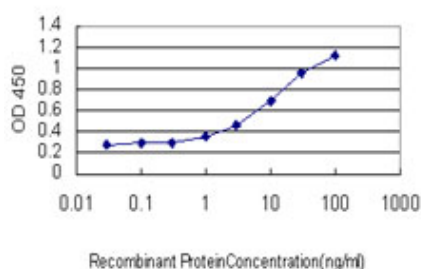


Antibody Reactive Against Recombinant Protein. Western Blot detection against Immunogen (37.84 KDa) .



Western Blot analysis of CNDP2 expression in transfected 293T cell line by CNDP2 monoclonal antibody (M09), clone 1B1.

Lane 1: CNDP2 transfected lysate(52.9 KDa).
Lane 2: Non-transfected lysate.



Detection limit for recombinant GST tagged CNDP2 is approximately 0.3ng/ml as a capture antibody.

Citations

- [Loss of 18q22.3 involving the carboxypeptidase of glutamate-like gene is associated with poor prognosis in resected pancreatic cancer.](#)

Please note: All products are 'FOR RESEARCH USE ONLY. NOT FOR USE IN DIAGNOSTIC OR THERAPEUTIC PROCEDURES'.