

COG6 Antibody (monoclonal) (M01)

Mouse monoclonal antibody raised against a partial recombinant COG6.

Catalog # AT1579a

Product Information

Application	WB, E
Primary Accession	Q9Y2V7
Other Accession	NM_020751
Reactivity	Human
Host	mouse
Clonality	monoclonal
Isotype	IgG1 Kappa
Clone Names	5B5
Calculated MW	73279

Additional Information

Gene ID	57511
Other Names	Conserved oligomeric Golgi complex subunit 6, COG complex subunit 6, Component of oligomeric Golgi complex 6, COG6, KIAA1134
Target/Specificity	COG6 (NP_065802, 558 a.a. ~ 657 a.a) partial recombinant protein with GST tag. MW of the GST tag alone is 26 KDa.
Dilution	WB~~1:500~1000 E~~N/A
Format	Clear, colorless solution in phosphate buffered saline, pH 7.2 .
Storage	Store at -20°C or lower. Aliquot to avoid repeated freezing and thawing.
Precautions	COG6 Antibody (monoclonal) (M01) is for research use only and not for use in diagnostic or therapeutic procedures.

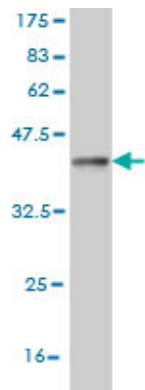
Background

This gene encodes a subunit of the conserved oligomeric Golgi complex that is required for maintaining normal structure and activity of the Golgi apparatus. The encoded protein is organized with conserved oligomeric Golgi complex components 5, 7 and 8 into a sub-complex referred to as lobe B. Alternative splicing results in multiple transcript variants.

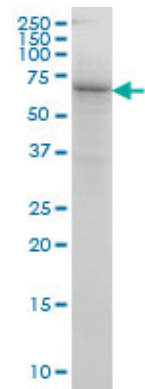
References

1.A genome-wide association study of psoriasis and psoriatic arthritis identifies new disease Loci.Liu Y, Helms C, Liao W, Zaba LC, Duan S, Gardner J, Wise C, Miner A, Malloy MJ, Pullinger CR, Kane JP, Saccone S,

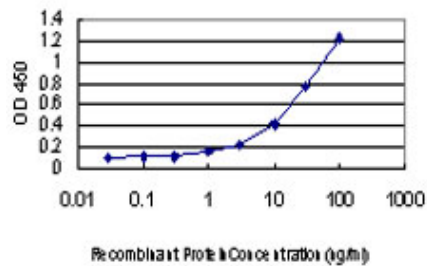
Images



Antibody Reactive Against Recombinant Protein. Western Blot detection against Immunogen (36.74 KDa) .



COG6 monoclonal antibody (M01), clone 5B5 Western Blot analysis of COG6 expression in A-431 (Cat # AT1579a)



Detection limit for recombinant GST tagged COG6 is approximately 1ng/ml as a capture antibody.

Please note: All products are 'FOR RESEARCH USE ONLY. NOT FOR USE IN DIAGNOSTIC OR THERAPEUTIC PROCEDURES'.