

COPI Antibody (monoclonal) (M01)

Mouse monoclonal antibody raised against a partial recombinant COPI.

Catalog # AT1590a

Product Information

Application	WB, E
Primary Accession	Q5EG05
Other Accession	NM_052889
Reactivity	Human
Host	mouse
Clonality	monoclonal
Isotype	IgG2b Kappa
Clone Names	3E11
Calculated MW	22625

Additional Information

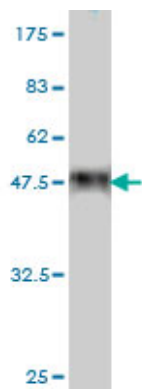
Gene ID	114769
Other Names	Caspase recruitment domain-containing protein 16, Caspase recruitment domain-only protein 1, CARD-only protein 1, Caspase-1 inhibitor COP, Pseudo interleukin-1 beta converting enzyme, Pseudo-ICE, Pseudo-IL1B-converting enzyme, CARD16, COP, COP1
Target/Specificity	COPI (NP_443121, 1 a.a. ~ 97 a.a) partial recombinant protein with GST tag. MW of the GST tag alone is 26 KDa.
Dilution	WB~~1:500~1000 E~~N/A
Format	Clear, colorless solution in phosphate buffered saline, pH 7.2 .
Storage	Store at -20°C or lower. Aliquot to avoid repeated freezing and thawing.
Precautions	COPI Antibody (monoclonal) (M01) is for research use only and not for use in diagnostic or therapeutic procedures.

References

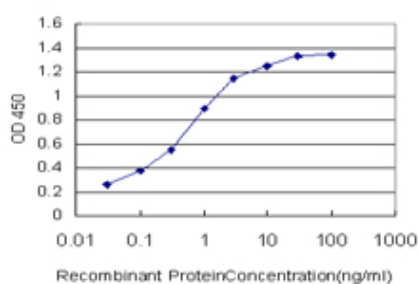
Variation at the NFATC2 Locus Increases the Risk of Thiazolinedinedione-Induced Edema in the Diabetes REduction Assessment with ramipril and rosiglitazone Medication (DREAM) Study. Bailey SD, et al. Diabetes Care, 2010 Jul 13. PMID 20628086. Gene-centric association signals for lipids and apolipoproteins identified via the HumanCVD BeadChip. Talmud PJ, et al. Am J Hum Genet, 2009 Nov. PMID 19913121. Protective role of Cop in Rip2/caspase-1/caspase-4-mediated HeLa cell death. Wang X, et al. Biochim Biophys Acta, 2006 Aug. PMID 16920334. Dysregulation of receptor interacting protein-2 and caspase recruitment domain only protein mediates aberrant caspase-1 activation in Huntington's disease. Wang X, et al. J Neurosci, 2005 Dec

14. PMID 16354923.INCA, a novel human caspase recruitment domain protein that inhibits interleukin-1beta generation. Lamkanfi M, et al. J Biol Chem, 2004 Dec 10. PMID 15383541.

Images



Antibody Reactive Against Recombinant Protein. Western Blot detection against Immunogen (36.41 KDa) .



Detection limit for recombinant GST tagged COP1 is approximately 0.03ng/ml as a capture antibody.

Please note: All products are 'FOR RESEARCH USE ONLY. NOT FOR USE IN DIAGNOSTIC OR THERAPEUTIC PROCEDURES'.