

CORIN Antibody (monoclonal) (M01)

Mouse monoclonal antibody raised against a partial recombinant CORIN.

Catalog # AT1593a

Product Information

Application	WB, E
Primary Accession	Q9Y5Q5
Other Accession	NM_006587
Reactivity	Human
Host	mouse
Clonality	monoclonal
Isotype	IgG1 Kappa
Clone Names	5B6
Calculated MW	116486

Additional Information

Gene ID	10699
Other Names	Atrial natriuretic peptide-converting enzyme, 3421-, Corin, Heart-specific serine proteinase ATC2, Pro-ANP-converting enzyme, Transmembrane protease serine 10, Atrial natriuretic peptide-converting enzyme, N-terminal propeptide, Atrial natriuretic peptide-converting enzyme, activated protease fragment, Atrial natriuretic peptide-converting enzyme, 180 kDa soluble fragment, Atrial natriuretic peptide-converting enzyme, 160 kDa soluble fragment, Atrial natriuretic peptide-converting enzyme, 100 kDa soluble fragment, CORIN, CRN, TMPRSS10
Target/Specificity	CORIN (NP_006578, 616 a.a. ~ 715 a.a) partial recombinant protein with GST tag. MW of the GST tag alone is 26 kDa.
Dilution	WB~~1:500~1000 E~~N/A
Format	Clear, colorless solution in phosphate buffered saline, pH 7.2 .
Storage	Store at -20°C or lower. Aliquot to avoid repeated freezing and thawing.
Precautions	CORIN Antibody (monoclonal) (M01) is for research use only and not for use in diagnostic or therapeutic procedures.

Background

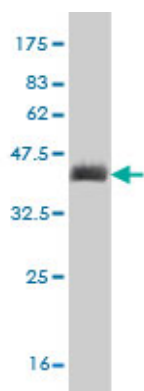
This gene encodes a member of the type II transmembrane serine protease class of the trypsin superfamily. Members of this family are composed of multiple structurally distinct domains. The encoded protein converts pro-atrial natriuretic peptide to biologically active atrial natriuretic peptide, a cardiac hormone that regulates blood volume and pressure. This protein may also function as a pro-brain-type natriuretic peptide

convertase.

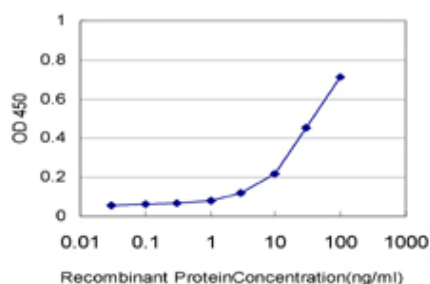
References

Variation at the NFATC2 Locus Increases the Risk of Thiazolinedione-Induced Edema in the Diabetes REduction Assessment with ramipril and rosiglitazone Medication (DREAM) Study. Bailey SD, et al. Diabetes Care, 2010 Jul 13. PMID 20628086. Dysfunctional corin i555(p568) allele is associated with impaired brain natriuretic peptide processing and adverse outcomes in blacks with systolic heart failure: results from the Genetic Risk Assessment in Heart Failure substudy. Rame JE, et al. Circ Heart Fail, 2009 Nov. PMID 19919978. Gene-centric association signals for lipids and apolipoproteins identified via the HumanCVD BeadChip. Talmud PJ, et al. Am J Hum Genet, 2009 Nov. PMID 19913121. Natriuretic peptide system gene variants are associated with ventricular dysfunction after coronary artery bypass grafting. Fox AA, et al. Anesthesiology, 2009 Apr. PMID 19326473. Corin variant associated with hypertension and cardiac hypertrophy exhibits impaired zymogen activation and natriuretic peptide processing activity. Wang W, et al. Circ Res, 2008 Aug 29. PMID 18669922.

Images



Antibody Reactive Against Recombinant Protein. Western Blot detection against Immunogen (36.74 KDa) .



Detection limit for recombinant GST tagged CORIN is approximately 3ng/ml as a capture antibody.

Please note: All products are 'FOR RESEARCH USE ONLY. NOT FOR USE IN DIAGNOSTIC OR THERAPEUTIC PROCEDURES'.