

CORO1A Antibody (monoclonal) (M01)

Mouse monoclonal antibody raised against a partial recombinant CORO1A.

Catalog # AT1594a

Product Information

Application	WB, IHC, E
Primary Accession	P31146
Other Accession	NM_007074
Reactivity	Human
Host	mouse
Clonality	monoclonal
Isotype	IgG2a Kappa
Clone Names	4G10
Calculated MW	51026

Additional Information

Gene ID	11151
Other Names	Coronin-1A, Coronin-like protein A, Clipin-A, Coronin-like protein p57, Tryptophan aspartate-containing coat protein, TACO, CORO1A, CORO1
Target/Specificity	CORO1A (NP_009005, 360 a.a. ~ 461 a.a) partial recombinant protein with GST tag. MW of the GST tag alone is 26 KDa.
Dilution	WB~~1:500~1000 IHC~~1:100~500 E~~N/A
Format	Clear, colorless solution in phosphate buffered saline, pH 7.2 .
Storage	Store at -20°C or lower. Aliquot to avoid repeated freezing and thawing.
Precautions	CORO1A Antibody (monoclonal) (M01) is for research use only and not for use in diagnostic or therapeutic procedures.

Background

This gene encodes a member of the WD repeat protein family. WD repeats are minimally conserved regions of approximately 40 amino acids typically bracketed by gly-his and trp-aspartate (GH-WD), which may facilitate formation of heterotrimeric or multiprotein complexes. Members of this family are involved in a variety of cellular processes, including cell cycle progression, signal transduction, apoptosis, and gene regulation. Alternative splicing results in multiple transcript variants. A related pseudogene has been defined on chromosome 16.

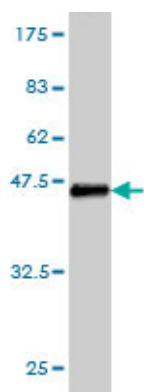
References

1. Coronin 1 regulates cognition and behavior through modulation of cAMP/protein kinase A signaling. Jayachandran R, Liu X, Bosedasgupta S, Muller P, Zhang CL, Moshous D, Studer V, Schneider J, Genoud C, Fossoud C, Gambino F, Khelifaoui M, Muller C, Bartholdi D, Rossez H, Stiess M, Houbaert X, Jaussi R, Frey D, Kammerer RA, Deupi X, de Villartay JP, Luthi A, Humeau Y, Pieters J. *PLoS Biol.* 2014 Mar 25;12(3):e1001820. doi: 10.1371/journal.pbio.1001820. eCollection 2014 Mar.

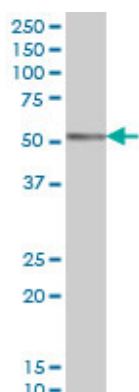
2. The actin-binding protein CORO1A is a novel PU.1 (SPI1)- and CEBPA-regulated gene with significantly lower expression in APL and CEBPA-mutated AML patients. Federzoni EA, Humbert M, Valk PJ, Behre G, Leibundgut EO, Torbett BE, Fey MF, Tschan MP. *Br J Haematol.* 2012 Dec 17. doi: 10.1111/bjh.12170.

3. Coronin-1 Is Associated with Neutrophil Survival and Is Cleaved during Apoptosis: Potential Implication in Neutrophils from Cystic Fibrosis Patients. Moriceau S, Kantari C, Mocek J, Davezac N, Gabillet J, Guerrera IC, Brouillard F, Tondelier D, Sermet-Gaudelus I, Danel C, Lenoir G, Daniel S, Edelman A, Witko-Sarsat V. *J Immunol.* 2009 Jun 1;182(11):7254-63.

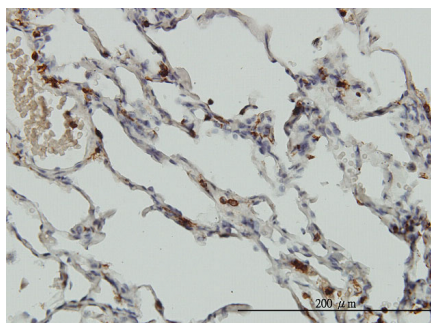
Images



Antibody Reactive Against Recombinant Protein. Western Blot detection against Immunogen (36.96 KDa) .

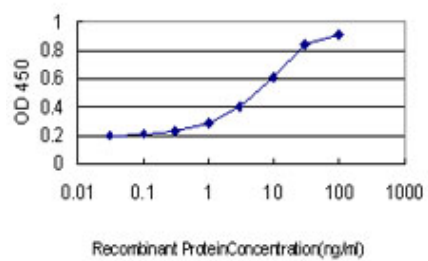


CORO1A monoclonal antibody (M01), clone 4G10 Western Blot analysis of CORO1A expression in K-562 (Cat # AT1594a)



Immunoperoxidase of monoclonal antibody to CORO1A on formalin-fixed paraffin-embedded human lung. [antibody concentration 3 ug/ml]

Detection limit for recombinant GST tagged CORO1A is approximately 0.1 ng/ml as a capture antibody.



Please note: All products are 'FOR RESEARCH USE ONLY. NOT FOR USE IN DIAGNOSTIC OR THERAPEUTIC PROCEDURES'.