

CORO1C Antibody (monoclonal) (M02)

Mouse monoclonal antibody raised against a partial recombinant CORO1C.

Catalog # AT1596a

Product Information

Application	WB, IHC, E
Primary Accession	Q9ULV4
Other Accession	NM_014325
Reactivity	Human
Host	mouse
Clonality	monoclonal
Isotype	IgG2a Kappa
Clone Names	1F7
Calculated MW	53249

Additional Information

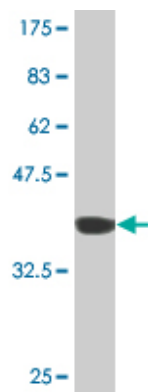
Gene ID	23603
Other Names	Coronin-1C, Coronin-3, hCRNN4, CORO1C, CRN2, CRNN4
Target/Specificity	CORO1C (NP_055140, 375 a.a. ~ 473 a.a) partial recombinant protein with GST tag. MW of the GST tag alone is 26 KDa.
Dilution	WB~~1:500~1000 IHC~~1:100~500 E~~N/A
Format	Clear, colorless solution in phosphate buffered saline, pH 7.2 .
Storage	Store at -20°C or lower. Aliquot to avoid repeated freezing and thawing.
Precautions	CORO1C Antibody (monoclonal) (M02) is for research use only and not for use in diagnostic or therapeutic procedures.

Background

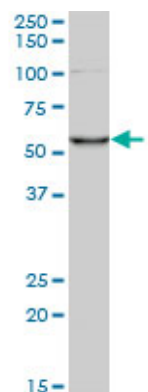
This gene encodes a member of the WD repeat protein family. WD repeats are minimally conserved regions of approximately 40 amino acids typically bracketed by gly-his and trp-aspartate (GH-WD), which may facilitate formation of heterotrimeric or multiprotein complexes. Members of this family are involved in a variety of cellular processes, including cell cycle progression, signal transduction, apoptosis, and gene regulation.

References

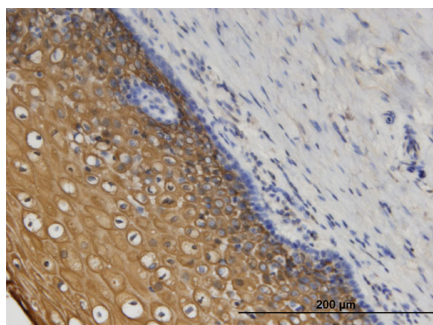
1.Activated Cdc42-Bound IQGAP1 Determines the Cellular Endocytic Site.Kimura T, Yamaoka M, Taniguchi S, Okamoto M, Takei M, Ando T, Iwamatsu A, Watanabe T, Kaibuchi K, Ishizaki T, Niki IMol Cell Biol. 2013 Dec;33(24):4834-43. doi: 10.1128/MCB.00895-13. Epub 2013 Oct 7.



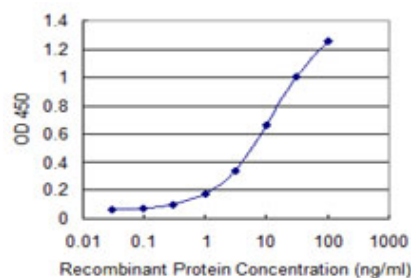
Antibody Reactive Against Recombinant Protein.Western Blot detection against Immunogen (36.63 KDa) .



CORO1C monoclonal antibody (M02), clone 1F7. Western Blot analysis of CORO1C expression in HeLa S3 NE ((Cat # AT1596a)



Immunoperoxidase of monoclonal antibody to CORO1C on formalin-fixed paraffin-embedded human uterine cervix. [antibody concentration 3 ug/ml]



Detection limit for recombinant GST tagged CORO1C is 0.1 ng/ml as a capture antibody.

Please note: All products are 'FOR RESEARCH USE ONLY. NOT FOR USE IN DIAGNOSTIC OR THERAPEUTIC PROCEDURES'.