

## CPSF6 Antibody (monoclonal) (M10)

Mouse monoclonal antibody raised against a partial recombinant CPSF6.

Catalog # AT1613a

### Product Information

---

<b>Application</b>	WB, IF, E
<b>Primary Accession</b>	<a href="#">Q16630</a>
<b>Other Accession</b>	<a href="#">NM_007007</a>
<b>Reactivity</b>	Human, Mouse
<b>Host</b>	mouse
<b>Clonality</b>	monoclonal
<b>Isotype</b>	IgG2a Kappa
<b>Clone Names</b>	3F11
<b>Calculated MW</b>	59210

### Additional Information

---

<b>Gene ID</b>	11052
<b>Other Names</b>	Cleavage and polyadenylation specificity factor subunit 6, Cleavage and polyadenylation specificity factor 68 kDa subunit, CFIm68, CPSF 68 kDa subunit, Pre-mRNA cleavage factor Im 68 kDa subunit, Protein HPBRII-4/7, CPSF6, CFIM68
<b>Target/Specificity</b>	CPSF6 (NP_008938, 37 a.a. ~ 136 a.a) partial recombinant protein with GST tag. MW of the GST tag alone is 26 KDa.
<b>Dilution</b>	WB~~1:500~1000 IF~~1:50~200 E~~N/A
<b>Format</b>	Clear, colorless solution in phosphate buffered saline, pH 7.2 .
<b>Storage</b>	Store at -20°C or lower. Aliquot to avoid repeated freezing and thawing.
<b>Precautions</b>	CPSF6 Antibody (monoclonal) (M10) is for research use only and not for use in diagnostic or therapeutic procedures.

### Background

---

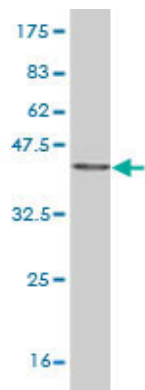
The protein encoded by this gene is one subunit of a cleavage factor required for 3' RNA cleavage and polyadenylation processing. The interaction of the protein with the RNA is one of the earliest steps in the assembly of the 3' end processing complex and facilitates the recruitment of other processing factors. The cleavage factor complex is composed of four polypeptides. This gene encodes the 68kD subunit. It has a domain organization reminiscent of spliceosomal proteins.

### References

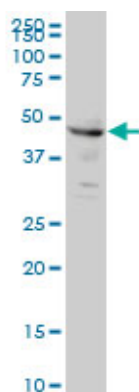
---

1.Evidence that cleavage factor Im is a heterotetrameric protein complex controlling alternative polyadenylation.Kim S, Yamamoto J, Chen Y, Aida M, Wada T, Handa H, Yamaguchi Y.Genes Cells. 2010 Sep 1;15(9):1003-13. Epub 2010 Jul 29.2.Novel snail1 target proteins in human colon cancer identified by proteomic analysis.Larriba MJ, Casado-Vela J, Pendas-Franco N, Pena R, Garcia de Herreros A, Berciano MT, Lafarga M, Casal JI, Munoz A.PLoS One. 2010 Apr 20;5(4):e10221.

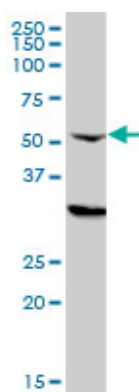
## Images



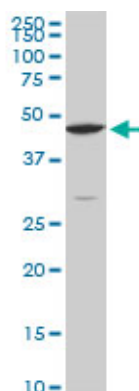
Antibody Reactive Against Recombinant Protein.Western Blot detection against Immunogen (36.74 KDa) .



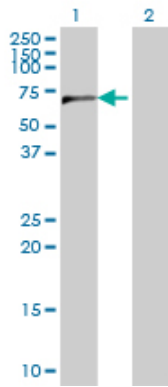
CPSF6 monoclonal antibody (M10), clone 3F11 Western Blot analysis of CPSF6 expression in HeLa ( Cat # AT1613a )



CPSF6 monoclonal antibody (M10), clone 3F11. Western Blot analysis of CPSF6 expression in HL-60 ( (Cat # AT1613a )

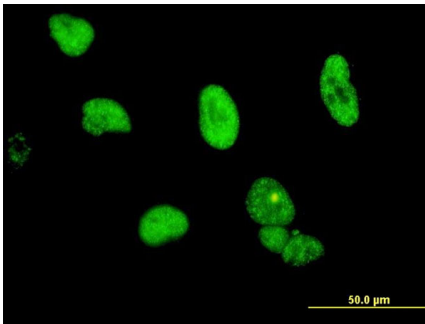


CPSF6 monoclonal antibody (M10), clone 3F11. Western Blot analysis of CPSF6 expression in Raw 264.7((Cat # AT1613a )

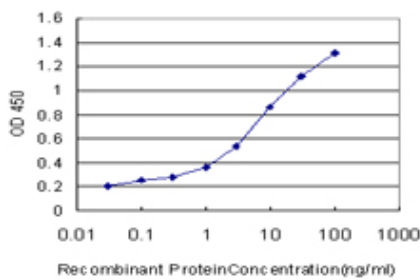


Western Blot analysis of CPSF6 expression in transfected 293T cell line by CPSF6 monoclonal antibody (M10), clone 3F11.

Lane 1: CPSF6 transfected lysate(59.21 kDa).  
Lane 2: Non-transfected lysate.



Immunofluorescence of monoclonal antibody to CPSF6 on HeLa cell. [antibody concentration 10 ug/ml]



Detection limit for recombinant GST tagged CPSF6 is approximately 0.03ng/ml as a capture antibody.

Please note: All products are 'FOR RESEARCH USE ONLY. NOT FOR USE IN DIAGNOSTIC OR THERAPEUTIC PROCEDURES'.