

CRKL Antibody (monoclonal) (M03)

Mouse monoclonal antibody raised against a partial recombinant CRKL.

Catalog # AT1624a

Product Information

Application	WB, IF, E
Primary Accession	P46109
Other Accession	NM_005207
Reactivity	Human
Host	mouse
Clonality	monoclonal
Isotype	IgG2b Kappa
Clone Names	4B5
Calculated MW	33777

Additional Information

Gene ID	1399
Other Names	Crk-like protein, CRKL
Target/Specificity	CRKL (NP_005198, 204 a.a. ~ 303 a.a) partial recombinant protein with GST tag. MW of the GST tag alone is 26 KDa.
Dilution	WB~~1:500~1000 IF~~1:50~200 E~~N/A
Format	Clear, colorless solution in phosphate buffered saline, pH 7.2 .
Storage	Store at -20°C or lower. Aliquot to avoid repeated freezing and thawing.
Precautions	CRKL Antibody (monoclonal) (M03) is for research use only and not for use in diagnostic or therapeutic procedures.

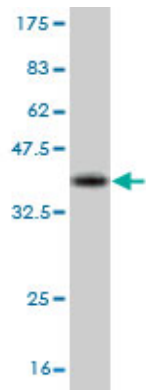
Background

This gene encodes a protein kinase containing SH2 and SH3 (src homology) domains which has been shown to activate the RAS and JUN kinase signaling pathways and transform fibroblasts in a RAS-dependent fashion. It is a substrate of the BCR-ABL tyrosine kinase, plays a role in fibroblast transformation by BCR-ABL, and may be oncogenic.

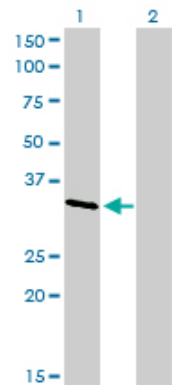
References

1.An analysis of protein-protein interactions in cross-talk pathways reveals CRKL as a novel prognostic marker in hepatocellular carcinoma.Liu CH, Chen TC, Chau GY, Jan YH, Chen CH, Hsu CN, Lin KT, Juang YL, Lu PJ, Cheng HC, Chen MH, Chang CF, Ting YS, Kao CY, Hsiao M, Huang CY.Mol Cell Proteomics. 2013 Feb 8.

Images

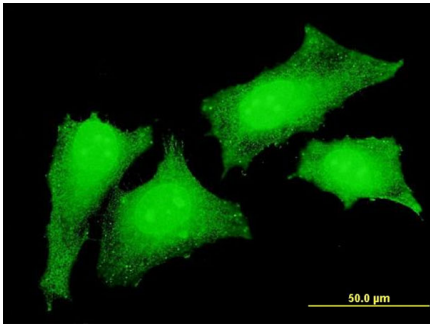


Antibody Reactive Against Recombinant Protein.Western Blot detection against Immunogen (36.74 KDa) .

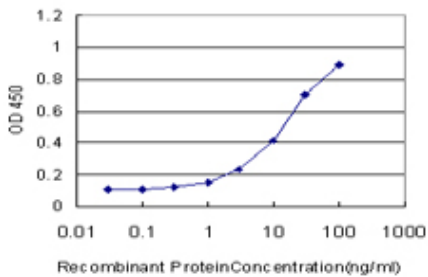


Western Blot analysis of CRKL expression in transfected 293T cell line by CRKL monoclonal antibody (M03), clone 4B5.

Lane 1: CRKL transfected lysate(33.8 KDa).
Lane 2: Non-transfected lysate.

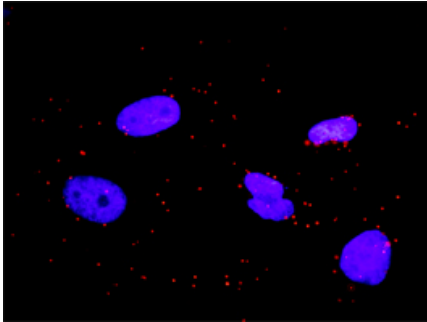
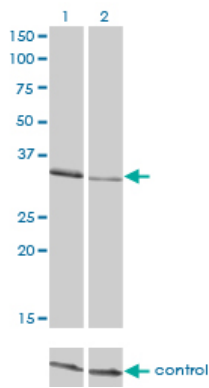


Immunofluorescence of monoclonal antibody to CRKL on HeLa cell . [antibody concentration 10 ug/ml]

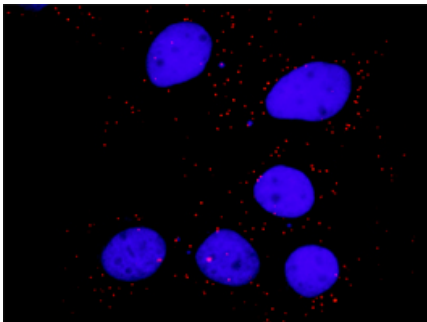


Detection limit for recombinant GST tagged CRKL is approximately 0.3ng/ml as a capture antibody.

Western blot analysis of CRKL over-expressed 293 cell line, cotransfected with CRKL Validated Chimera RNAi (Cat # AT1624a)



Proximity Ligation Analysis of protein-protein interactions between GAB1 and CRKL. HeLa cells were stained with anti-GAB1 rabbit purified polyclonal 1:1200 and anti-CRKL mouse monoclonal antibody 1:50. Each red dot represents the detection of protein-protein interaction complex, and nuclei were counterstained with DAPI (blue).



Proximity Ligation Analysis of protein-protein interactions between PTK2 and CRKL. Huh7 cells were stained with anti-PTK2 rabbit purified polyclonal 1:600 and anti-CRKL mouse monoclonal antibody 1:100. Each red dot represents the detection of protein-protein interaction complex, and nuclei were counterstained with DAPI (blue).

Please note: All products are 'FOR RESEARCH USE ONLY. NOT FOR USE IN DIAGNOSTIC OR THERAPEUTIC PROCEDURES'.