

## CRSP8 Antibody (monoclonal) (M01)

Mouse monoclonal antibody raised against a full length recombinant CRSP8.

Catalog # AT1634a

### Product Information

---

<b>Application</b>	WB, IHC, E
<b>Primary Accession</b>	<a href="#">Q6P2C8</a>
<b>Other Accession</b>	<a href="#">BC002878</a>
<b>Reactivity</b>	Human
<b>Host</b>	mouse
<b>Clonality</b>	monoclonal
<b>Isotype</b>	IgG1 Kappa
<b>Clone Names</b>	8B8
<b>Calculated MW</b>	35432

### Additional Information

---

<b>Gene ID</b>	9442
<b>Other Names</b>	Mediator of RNA polymerase II transcription subunit 27, Cofactor required for Sp1 transcriptional activation subunit 8, CRSP complex subunit 8, Mediator complex subunit 27, P37 TRAP/SMCC/PC2 subunit, Transcriptional coactivator CRSP34, MED27, CRSP34 {ECO:0000312 EMBL:AAD127211}, CRSP8
<b>Target/Specificity</b>	CRSP8 (AAH02878, 1 a.a. ~ 70 a.a) full-length recombinant protein with GST tag. MW of the GST tag alone is 26 KDa.
<b>Dilution</b>	WB~~1:500~1000 IHC~~1:100~500 E~~N/A
<b>Format</b>	Clear, colorless solution in phosphate buffered saline, pH 7.2 .
<b>Storage</b>	Store at -20°C or lower. Aliquot to avoid repeated freezing and thawing.
<b>Precautions</b>	CRSP8 Antibody (monoclonal) (M01) is for research use only and not for use in diagnostic or therapeutic procedures.

### Background

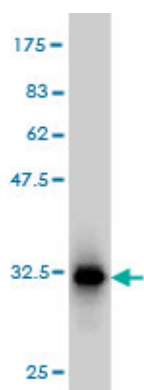
---

The activation of gene transcription is a multistep process that is triggered by factors that recognize transcriptional enhancer sites in DNA. These factors work with co-activators to direct transcriptional initiation by the RNA polymerase II apparatus. The protein encoded by this gene is a subunit of the CRSP (cofactor required for SP1 activation) complex, which, along with TFIID, is required for efficient activation by SP1. This protein is also a component of other multisubunit complexes e.g. thyroid hormone receptor-(TR-) associated proteins which interact with TR and facilitate TR function on DNA templates in conjunction with initiation factors and cofactors.

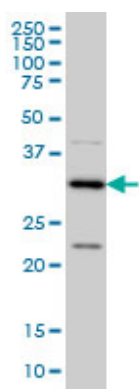
## References

Toward a confocal subcellular atlas of the human proteome. Barbe L, et al. Mol Cell Proteomics, 2008 Mar. PMID 18029348. MED1/TRAP220 exists predominantly in a TRAP/ Mediator subpopulation enriched in RNA polymerase II and is required for ER-mediated transcription. Zhang X, et al. Mol Cell, 2005 Jul 1. PMID 15989967. The status, quality, and expansion of the NIH full-length cDNA project: the Mammalian Gene Collection (MGC). Gerhard DS, et al. Genome Res, 2004 Oct. PMID 15489334. A set of consensus mammalian mediator subunits identified by multidimensional protein identification technology. Sato S, et al. Mol Cell, 2004 Jun 4. PMID 15175163. DNA sequence and analysis of human chromosome 9. Humphray SJ, et al. Nature, 2004 May 27. PMID 15164053.

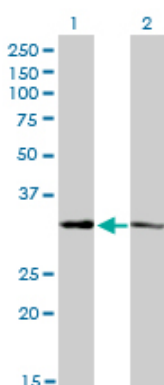
## Images



Antibody Reactive Against Recombinant Protein. Western Blot detection against Immunogen (33.44 KDa) .



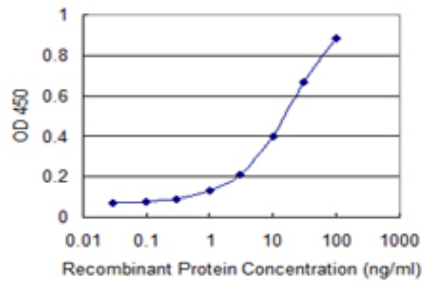
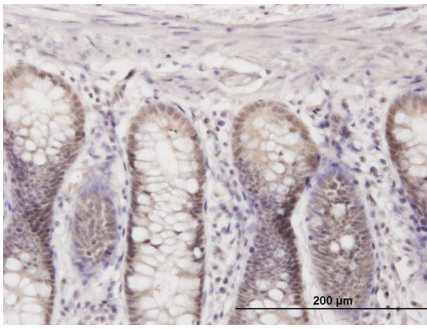
CRSP8 monoclonal antibody (M01), clone 8B8 Western Blot analysis of CRSP8 expression in Hela S3 NE ( (Cat # AT1634a )



Western Blot analysis of CRSP8 expression in transfected 293T cell line by CRSP8 monoclonal antibody (M01), clone 8B8.

Lane 1: CRSP8 transfected lysate(35.4 KDa).  
Lane 2: Non-transfected lysate.

Immunoperoxidase of monoclonal antibody to CRSP8 on formalin-fixed paraffin-embedded human colon. [antibody concentration 0.3 ug/ml]



Detection limit for recombinant GST tagged MED27 is 0.3 ng/ml as a capture antibody.

Please note: All products are 'FOR RESEARCH USE ONLY. NOT FOR USE IN DIAGNOSTIC OR THERAPEUTIC PROCEDURES'.