

## CRX Antibody (monoclonal) (M03)

Mouse monoclonal antibody raised against a partial recombinant CRX.

Catalog # AT1638a

### Product Information

---

<b>Application</b>	WB, E
<b>Primary Accession</b>	<a href="#">O43186</a>
<b>Other Accession</b>	<a href="#">NM_000554</a>
<b>Reactivity</b>	Human, Rat
<b>Host</b>	mouse
<b>Clonality</b>	monoclonal
<b>Isotype</b>	IgG2a Kappa
<b>Clone Names</b>	2F12
<b>Calculated MW</b>	32261

### Additional Information

---

<b>Gene ID</b>	1406
<b>Other Names</b>	Cone-rod homeobox protein, CRX, CORD2
<b>Target/Specificity</b>	CRX (NP_000545, 1 a.a. ~ 95 a.a) partial recombinant protein with GST tag. MW of the GST tag alone is 26 KDa.
<b>Dilution</b>	WB~~1:500~1000 E~~N/A
<b>Format</b>	Clear, colorless solution in phosphate buffered saline, pH 7.2 .
<b>Storage</b>	Store at -20°C or lower. Aliquot to avoid repeated freezing and thawing.
<b>Precautions</b>	CRX Antibody (monoclonal) (M03) is for research use only and not for use in diagnostic or therapeutic procedures.

### Background

---

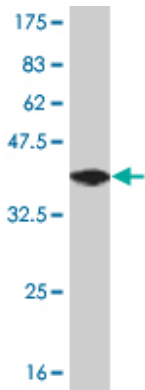
The protein encoded by this gene is a photoreceptor-specific transcription factor which plays a role in the differentiation of photoreceptor cells. This homeodomain protein is necessary for the maintenance of normal cone and rod function. Mutations in this gene are associated with photoreceptor degeneration, Leber congenital amaurosis type III and the autosomal dominant cone-rod dystrophy 2. Several alternatively spliced transcript variants of this gene have been described, but the full-length nature of some variants has not been determined.

### References

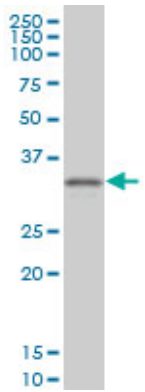
---

1. OTX2 and CRX rescue overlapping and photoreceptor-specific functions in the Drosophila eye. Terrell D, Xie

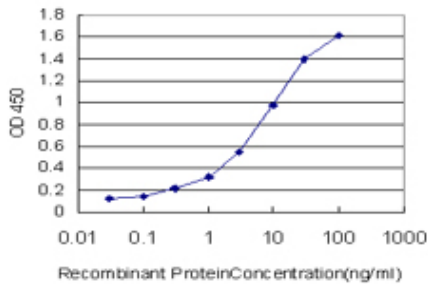
Images



Antibody Reactive Against Recombinant Protein.Western Blot detection against Immunogen (36.19 KDa) .



CRX monoclonal antibody (M03), clone 2F12 Western Blot analysis of CRX expression in PC-12 ( (Cat # AT1638a )



Detection limit for recombinant GST tagged CRX is approximately 0.1ng/ml as a capture antibody.

Please note: All products are 'FOR RESEARCH USE ONLY. NOT FOR USE IN DIAGNOSTIC OR THERAPEUTIC PROCEDURES'.