

CRY1 Antibody (monoclonal) (M01)

Mouse monoclonal antibody raised against a full length recombinant CRY1.

Catalog # AT1640a

Product Information

Application	WB, IHC, IF
Primary Accession	Q16526
Other Accession	BC030519
Reactivity	Human
Host	mouse
Clonality	monoclonal
Isotype	IgG1 kappa
Clone Names	4H4-1C4
Calculated MW	66395

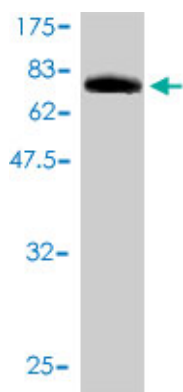
Additional Information

Gene ID	1407
Other Names	Cryptochrome-1, CRY1, PHLL1
Target/Specificity	CRY1 (AAH30519, 1 a.a. ~ 586 a.a) full-length recombinant protein with GST tag. MW of the GST tag alone is 26 KDa.
Dilution	WB~~1:500~1000 IHC~~1:100~500 IF~~1:50~200
Format	Clear, colorless solution in phosphate buffered saline, pH 7.2 .
Storage	Store at -20°C or lower. Aliquot to avoid repeated freezing and thawing.
Precautions	CRY1 Antibody (monoclonal) (M01) is for research use only and not for use in diagnostic or therapeutic procedures.

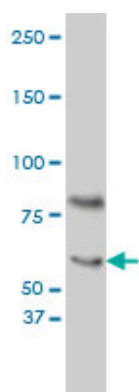
References

Response to methadone maintenance treatment is associated with the MYOCD and GRM6 genes. Fonseca F, et al. Mol Diagn Ther, 2010 Jun 1. PMID 20560679. Personalized smoking cessation: interactions between nicotine dose, dependence and quit-success genotype score. Rose JE, et al. Mol Med, 2010 Jul-Aug. PMID 20379614. Systematic analysis of circadian genes in a population-based sample reveals association of TIMELESS with depression and sleep disturbance. Utge SJ, et al. PLoS One, 2010 Feb 18. PMID 20174623. Differential association of circadian genes with mood disorders: CRY1 and NPAS2 are associated with unipolar major depression and CLOCK and VIP with bipolar disorder. Soria V, et al. Neuropsychopharmacology, 2010 May. PMID 20072116. Testing the circadian gene hypothesis in prostate cancer: a population-based case-control study. Zhu Y, et al. Cancer Res, 2009 Dec 15. PMID 19934327.

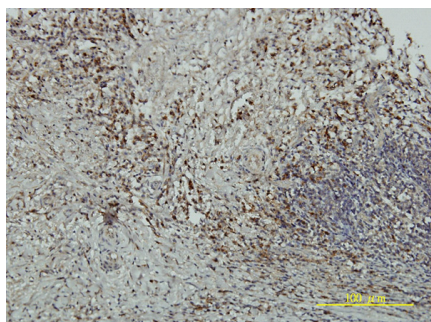
Images



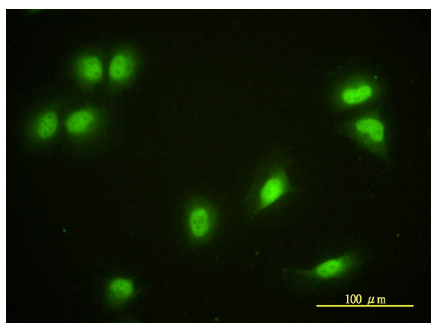
Antibody Reactive Against Recombinant Protein. Western Blot detection against Immunogen (90.2 KDa) .



CRY1 monoclonal antibody (M01), clone 4H4-1C4 Western Blot analysis of CRY1 expression in HeLa S3 NE ((Cat # AT1640a)



Immunoperoxidase of monoclonal antibody to CRY1 on formalin-fixed paraffin-embedded human colon adenocarcinoma tissue. [antibody concentration 5 ug/ml]



Immunofluorescence of monoclonal antibody to CRY1 on HeLa cell. [antibody concentration 10 ug/ml]

Please note: All products are 'FOR RESEARCH USE ONLY. NOT FOR USE IN DIAGNOSTIC OR THERAPEUTIC PROCEDURES'.