

## CSDA Antibody (monoclonal) (M06)

Mouse monoclonal antibody raised against a partial recombinant CSDA.

Catalog # AT1649a

### Product Information

---

<b>Application</b>	WB, IF, E
<b>Primary Accession</b>	<a href="#">P16989</a>
<b>Other Accession</b>	<a href="#">NM_003651</a>
<b>Reactivity</b>	Human
<b>Host</b>	Mouse
<b>Clonality</b>	monoclonal
<b>Isotype</b>	IgG2a Kappa
<b>Clone Names</b>	1H5
<b>Calculated MW</b>	40090

### Additional Information

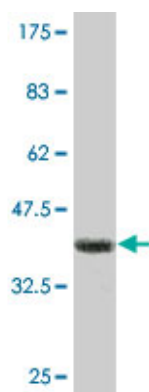
---

<b>Gene ID</b>	8531
<b>Other Names</b>	Y-box-binding protein 3, Cold shock domain-containing protein A, DNA-binding protein A, Single-strand DNA-binding protein NF-GMB, YBX3, CSDA, DBPA
<b>Target/Specificity</b>	CSDA (NP_003642, 241 a.a. ~ 330 a.a) partial recombinant protein with GST tag. MW of the GST tag alone is 26 KDa.
<b>Dilution</b>	WB~~1:500~1000 IF~~1:50~200 E~~N/A
<b>Format</b>	Clear, colorless solution in phosphate buffered saline, pH 7.2 .
<b>Storage</b>	Store at -20°C or lower. Aliquot to avoid repeated freezing and thawing.
<b>Precautions</b>	CSDA Antibody (monoclonal) (M06) is for research use only and not for use in diagnostic or therapeutic procedures.

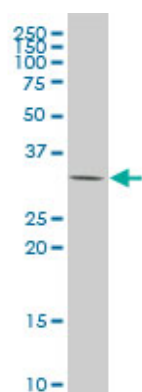
### References

---

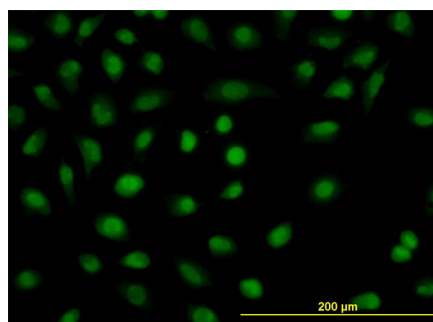
ZONAB promotes proliferation and represses differentiation of proximal tubule epithelial cells. Lima WR, et al. J Am Soc Nephrol, 2010 Mar. PMID 20133480. Upregulation of human DNA binding protein A (dbpA) in gastric cancer cells. Wang GR, et al. Acta Pharmacol Sin, 2009 Oct. PMID 19749785. A dominant negative mutant of the E. coli RNA helicase DbpA blocks assembly of the 50S ribosomal subunit. Sharpe Elles LM, et al. Nucleic Acids Res, 2009 Oct. PMID 19734347. The metastasis efficiency modifier ribosomal RNA processing 1 homolog B (RRP1B) is a chromatin-associated factor. Crawford NP, et al. J Biol Chem, 2009 Oct 16. PMID 19710015. The symplekin/ZONAB complex inhibits intestinal cell differentiation by the repression of AML1/Runx1. Buchert M, et al. Gastroenterology, 2009 Jul. PMID 19328795.



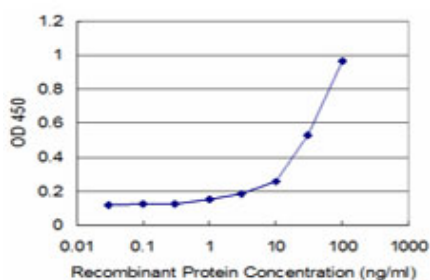
Antibody Reactive Against Recombinant Protein. Western Blot detection against Immunogen (35.64 KDa) .



CSDA monoclonal antibody (M06), clone 1H5 Western Blot analysis of CSDA expression in HeLa ( (Cat # AT1649a )



Immunofluorescence of monoclonal antibody to CSDA on HeLa cell. [antibody concentration 10 ug/ml]



Detection limit for recombinant GST tagged CSDA is approximately 3ng/ml as a capture antibody.

Please note: All products are 'FOR RESEARCH USE ONLY. NOT FOR USE IN DIAGNOSTIC OR THERAPEUTIC PROCEDURES'.