

CSE1L Antibody (monoclonal) (M01)

Mouse monoclonal antibody raised against a partial recombinant CSE1L.

Catalog # AT1650a

Product Information

Application	WB, IF
Primary Accession	P55060
Other Accession	NM_001316
Reactivity	Human
Host	mouse
Clonality	monoclonal
Isotype	IgG1 kappa
Clone Names	2B7
Calculated MW	110417

Additional Information

Gene ID	1434
Other Names	Exportin-2, Exp2, Cellular apoptosis susceptibility protein, Chromosome segregation 1-like protein, Importin-alpha re-exporter, CSE1L, CAS, XPO2
Target/Specificity	CSE1L (NP_001307, 872 a.a. ~ 971 a.a) partial recombinant protein with GST tag. MW of the GST tag alone is 26 KDa.
Dilution	WB~~1:500~1000 IF~~1:50~200
Format	Clear, colorless solution in phosphate buffered saline, pH 7.2 .
Storage	Store at -20°C or lower. Aliquot to avoid repeated freezing and thawing.
Precautions	CSE1L Antibody (monoclonal) (M01) is for research use only and not for use in diagnostic or therapeutic procedures.

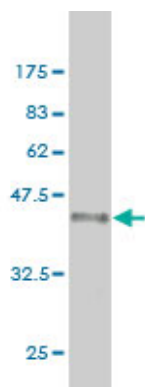
Background

Proteins that carry a nuclear localization signal (NLS) are transported into the nucleus by the importin-alpha/beta heterodimer. Importin-alpha binds the NLS, while importin-beta mediates translocation through the nuclear pore complex. After translocation, RanGTP binds importin-beta and displaces importin-alpha. Importin-alpha must then be returned to the cytoplasm, leaving the NLS protein behind. The protein encoded by this gene binds strongly to NLS-free importin-alpha, and this binding is released in the cytoplasm by the combined action of RANBP1 and RANGAP1. In addition, the encoded protein may play a role both in apoptosis and in cell proliferation.

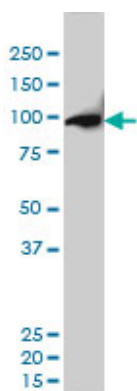
References

1. Interdependency of Cystathione γ -Lyase and Cystathione β -Synthase in Hydrogen Sulfide-Induced Blood Pressure Regulation in Rats. Roy A, Khan AH, Islam MT, Prieto MC, Majid DS. Am J Hypertens. 2011 Aug 25. doi: 10.1038/ajh.2011.149. [Epub ahead of print]

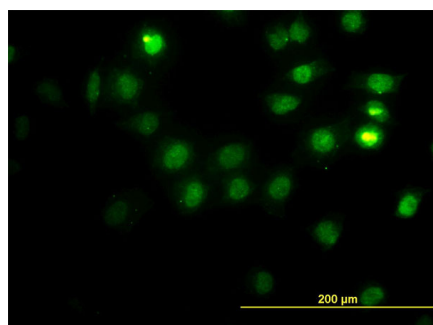
Images



Antibody Reactive Against Recombinant Protein. Western Blot detection against Immunogen (36.74 KDa) .



CSE1L monoclonal antibody (M01), clone 2B7 Western Blot analysis of CSE1L expression in HeLa S3 NE ((Cat # AT1650a)



Immunofluorescence of monoclonal antibody to CSE1L on HeLa cell. [antibody concentration 25 ug/ml]

Please note: All products are 'FOR RESEARCH USE ONLY. NOT FOR USE IN DIAGNOSTIC OR THERAPEUTIC PROCEDURES'.