

CSE1L Antibody (monoclonal) (M02)

Mouse monoclonal antibody raised against a partial recombinant CSE1L.

Catalog # AT1651a

Product Information

| | |
|--------------------------|---------------------------|
| Application | WB, IF, E |
| Primary Accession | P55060 |
| Other Accession | NM_001316 |
| Reactivity | Human |
| Host | mouse |
| Clonality | monoclonal |
| Isotype | IgG1 kappa |
| Clone Names | 1E5 |
| Calculated MW | 110417 |

Additional Information

| | |
|---------------------------|--|
| Gene ID | 1434 |
| Other Names | Exportin-2, Exp2, Cellular apoptosis susceptibility protein, Chromosome segregation 1-like protein, Importin-alpha re-exporter, CSE1L, CAS, XPO2 |
| Target/Specificity | CSE1L (NP_001307, 872 a.a. ~ 971 a.a) partial recombinant protein with GST tag. MW of the GST tag alone is 26 KDa. |
| Dilution | WB~~1:500~1000 IF~~1:50~200 E~~N/A |
| Format | Clear, colorless solution in phosphate buffered saline, pH 7.2 . |
| Storage | Store at -20°C or lower. Aliquot to avoid repeated freezing and thawing. |
| Precautions | CSE1L Antibody (monoclonal) (M02) is for research use only and not for use in diagnostic or therapeutic procedures. |

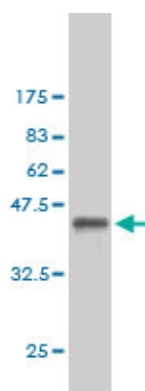
Background

Proteins that carry a nuclear localization signal (NLS) are transported into the nucleus by the importin-alpha/beta heterodimer. Importin-alpha binds the NLS, while importin-beta mediates translocation through the nuclear pore complex. After translocation, RanGTP binds importin-beta and displaces importin-alpha. Importin-alpha must then be returned to the cytoplasm, leaving the NLS protein behind. The protein encoded by this gene binds strongly to NLS-free importin-alpha, and this binding is released in the cytoplasm by the combined action of RANBP1 and RANGAP1. In addition, the encoded protein may play a role both in apoptosis and in cell proliferation.

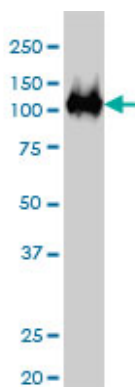
References

Defining the human deubiquitinating enzyme interaction landscape. Sowa ME, et al. Cell, 2009 Jul 23. PMID 19615732. Function of CSE1L/CAS in the secretion of HT-29 human colorectal cells and its expression in human colon. Tsao TY, et al. Mol Cell Biochem, 2009 Jul. PMID 19224336. PHAPI, CAS, and Hsp70 promote apoptosome formation by preventing Apaf-1 aggregation and enhancing nucleotide exchange on Apaf-1. Kim HE, et al. Mol Cell, 2008 Apr 25. PMID 18439902. Dissection of the molecular mechanisms that control the nuclear accumulation of transport factors importin-alpha and CAS in stressed cells. Kodiha M, et al. Cell Mol Life Sci, 2008 Jun. PMID 18425415. CSE1L/CAS, a microtubule-associated protein, inhibits taxol (paclitaxel)-induced apoptosis but enhances cancer cell apoptosis induced by various chemotherapeutic drugs. Liao CF, et al. BMB Rep, 2008 Mar 31. PMID 18377724.

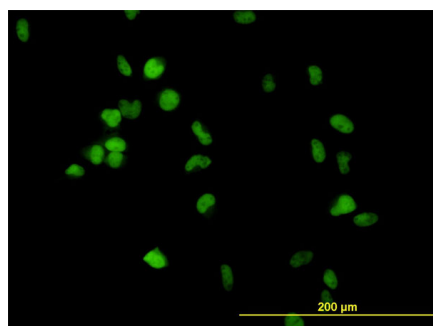
Images



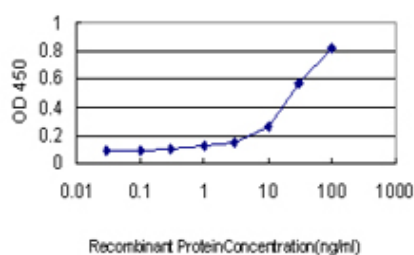
Antibody Reactive Against Recombinant Protein. Western Blot detection against Immunogen (36.74 KDa) .



CSE1L monoclonal antibody (M02), clone 1E4 Western Blot analysis of CSE1L expression in K-562 ((Cat # AT1651a)



Immunofluorescence of monoclonal antibody to CSE1L on HeLa cell. [antibody concentration 10 ug/ml]



Detection limit for recombinant GST tagged CSE1L is approximately 0.3ng/ml as a capture antibody.

Please note: All products are 'FOR RESEARCH USE ONLY. NOT FOR USE IN DIAGNOSTIC OR THERAPEUTIC PROCEDURES'.