

## CSE1L Antibody (monoclonal) (M04)

Mouse monoclonal antibody raised against a partial recombinant CSE1L.

Catalog # AT1653a

### Product Information

---

<b>Application</b>	WB, IHC, IF, E
<b>Primary Accession</b>	<a href="#">P55060</a>
<b>Other Accession</b>	<a href="#">NM_001316</a>
<b>Reactivity</b>	Human
<b>Host</b>	mouse
<b>Clonality</b>	monoclonal
<b>Isotype</b>	IgG1 kappa
<b>Clone Names</b>	2F4
<b>Calculated MW</b>	110417

### Additional Information

---

<b>Gene ID</b>	1434
<b>Other Names</b>	Exportin-2, Exp2, Cellular apoptosis susceptibility protein, Chromosome segregation 1-like protein, Importin-alpha re-exporter, CSE1L, CAS, XPO2
<b>Target/Specificity</b>	CSE1L (NP_001307, 872 a.a. ~ 971 a.a) partial recombinant protein with GST tag. MW of the GST tag alone is 26 KDa.
<b>Dilution</b>	WB~~1:500~1000 IHC~~1:100~500 IF~~1:50~200 E~~N/A
<b>Format</b>	Clear, colorless solution in phosphate buffered saline, pH 7.2 .
<b>Storage</b>	Store at -20°C or lower. Aliquot to avoid repeated freezing and thawing.
<b>Precautions</b>	CSE1L Antibody (monoclonal) (M04) is for research use only and not for use in diagnostic or therapeutic procedures.

### Background

---

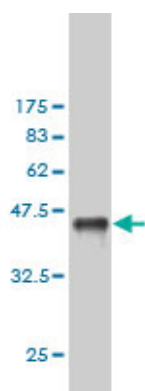
Proteins that carry a nuclear localization signal (NLS) are transported into the nucleus by the importin-alpha/beta heterodimer. Importin-alpha binds the NLS, while importin-beta mediates translocation through the nuclear pore complex. After translocation, RanGTP binds importin-beta and displaces importin-alpha. Importin-alpha must then be returned to the cytoplasm, leaving the NLS protein behind. The protein encoded by this gene binds strongly to NLS-free importin-alpha, and this binding is released in the cytoplasm by the combined action of RANBP1 and RANGAP1. In addition, the encoded protein may play a role both in apoptosis and in cell proliferation.

### References

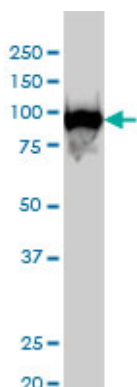
---

Defining the human deubiquitinating enzyme interaction landscape. Sowa ME, et al. Cell, 2009 Jul 23. PMID 19615732. Function of CSE1L/CAS in the secretion of HT-29 human colorectal cells and its expression in human colon. Tsao TY, et al. Mol Cell Biochem, 2009 Jul. PMID 19224336. PHAPI, CAS, and Hsp70 promote apoptosome formation by preventing Apaf-1 aggregation and enhancing nucleotide exchange on Apaf-1. Kim HE, et al. Mol Cell, 2008 Apr 25. PMID 18439902. Dissection of the molecular mechanisms that control the nuclear accumulation of transport factors importin-alpha and CAS in stressed cells. Kodiha M, et al. Cell Mol Life Sci, 2008 Jun. PMID 18425415. CSE1L/CAS, a microtubule-associated protein, inhibits taxol (paclitaxel)-induced apoptosis but enhances cancer cell apoptosis induced by various chemotherapeutic drugs. Liao CF, et al. BMB Rep, 2008 Mar 31. PMID 18377724.

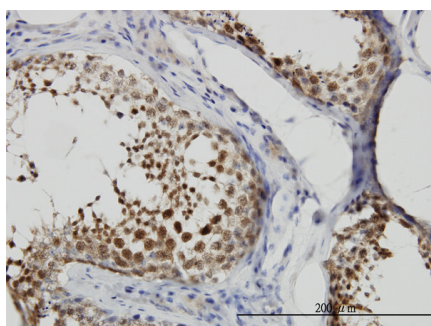
## Images



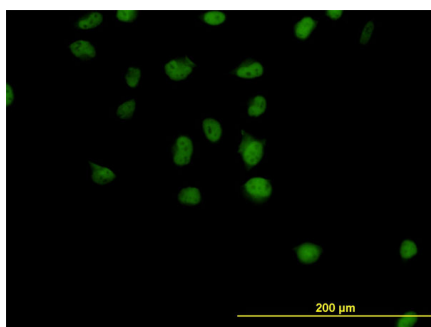
Antibody Reactive Against Recombinant Protein. Western Blot detection against Immunogen (36.74 KDa) .



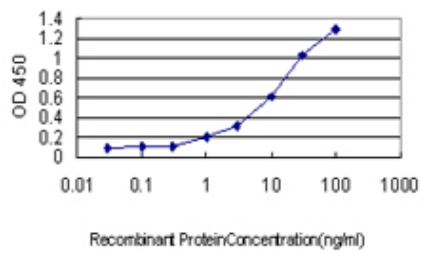
CSE1L monoclonal antibody (M04), clone 2F4 Western Blot analysis of CSE1L expression in HeLa S3 NE (Cat # AT1653a )



Immunoperoxidase of monoclonal antibody to CSE1L on formalin-fixed paraffin-embedded human testis. [antibody concentration 6 ug/ml]



Immunofluorescence of monoclonal antibody to CSE1L on HeLa cell. [antibody concentration 10 ug/ml]



Detection limit for recombinant GST tagged CSE1L is approximately 0.1ng/ml as a capture antibody.

Please note: All products are 'FOR RESEARCH USE ONLY. NOT FOR USE IN DIAGNOSTIC OR THERAPEUTIC PROCEDURES'.