

# CSF1 Antibody (monoclonal) (M01)

Mouse monoclonal antibody raised against a partial recombinant CSF1.  
Catalog # AT1655a

## Product Information

---

|                          |                          |
|--------------------------|--------------------------|
| <b>Application</b>       | WB, E                    |
| <b>Primary Accession</b> | <a href="#">P09603</a>   |
| <b>Other Accession</b>   | <a href="#">BC021117</a> |
| <b>Reactivity</b>        | Human                    |
| <b>Host</b>              | mouse                    |
| <b>Clonality</b>         | monoclonal               |
| <b>Isotype</b>           | IgG1 Kappa               |
| <b>Clone Names</b>       | 1A9                      |
| <b>Calculated MW</b>     | 60179                    |

## Additional Information

---

|                           |  |
|---------------------------|--|
| <b>Gene ID</b>            | 1435   |
| <b>Other Names</b>        | Macrophage colony-stimulating factor 1, CSF-1, M-CSF, MCSF, Lanimostim, Processed macrophage colony-stimulating factor 1, CSF1 |
| <b>Target/Specificity</b> | CSF1 (AAH21117, 33 a.a. ~ 132 a.a) partial recombinant protein with GST tag. MW of the GST tag alone is 26 KDa.                |
| <b>Dilution</b>           | WB~~1:500~1000 E~~N/A  |
| <b>Format</b>             | Clear, colorless solution in phosphate buffered saline, pH 7.2 .   |
| <b>Storage</b>            | Store at -20°C or lower. Aliquot to avoid repeated freezing and thawing.   |
| <b>Precautions</b>        | CSF1 Antibody (monoclonal) (M01) is for research use only and not for use in diagnostic or therapeutic procedures.             |

## Background

---

The protein encoded by this gene is a cytokine that controls the production, differentiation, and function of macrophages. The active form of the protein is found extracellularly as a disulfide-linked homodimer, and is thought to be produced by proteolytic cleavage of membrane-bound precursors. The encoded protein may be involved in development of the placenta. Four transcript variants encoding three different isoforms have been found for this gene.

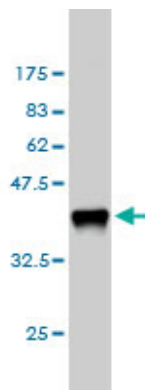
## References

---

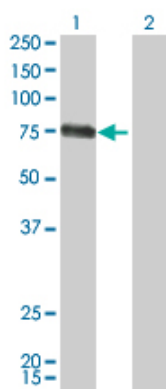
1.miR148b is a major coordinator of breast cancer progression in a relapse-associated microRNA signature

by targeting ITGA5, ROCK1, PIK3CA, NRAS, and CSF1. Cimino D, De Pitta C, Orso F, Zampini M, Casara S, Penna E, Quaglino E, Forni M, Damasco C, Pinatel E, Ponzzone R, Romualdi C, Brisken C, De Bortoli M, Biglia N, Provero P, Lanfranchi G, Taverna DFASEB J. 2013 Mar;27(3):1223-35. doi: 10.1096/fj.12-214692. Epub 2012 Dec 11.2. Pathway-Based Biomarker Search by High-Throughput Proteomics Profiling of Secretomes. Lawlor K, Nazarian A, Lacomis L, Tempst P, Villanueva J. J Proteome Res. 2009 Mar;8(3):1489-503.

## Images

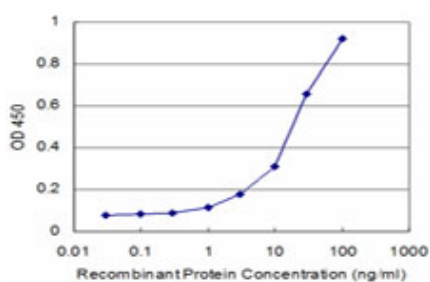


Antibody Reactive Against Recombinant Protein. Western Blot detection against Immunogen (36.63 KDa) .



Western Blot analysis of CSF1 expression in transfected 293T cell line by CSF1 monoclonal antibody (M01), clone 1A9.

Lane 1: CSF1 transfected lysate (60.1 KDa).  
Lane 2: Non-transfected lysate.



Detection limit for recombinant GST tagged CSF1 is approximately 3ng/ml as a capture antibody.

Please note: All products are 'FOR RESEARCH USE ONLY. NOT FOR USE IN DIAGNOSTIC OR THERAPEUTIC PROCEDURES'.