

## CSPG5 Antibody (monoclonal) (M01)

Mouse monoclonal antibody raised against a partial recombinant CSPG5.

Catalog # AT1657a

### Product Information

---

<b>Application</b>	WB, E
<b>Primary Accession</b>	<a href="#">O95196</a>
<b>Other Accession</b>	<a href="#">NM_006574</a>
<b>Reactivity</b>	Human
<b>Host</b>	mouse
<b>Clonality</b>	monoclonal
<b>Isotype</b>	IgG1 Kappa
<b>Clone Names</b>	5C11
<b>Calculated MW</b>	60016

### Additional Information

---

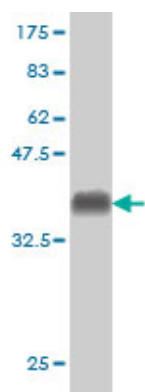
<b>Gene ID</b>	10675
<b>Other Names</b>	Chondroitin sulfate proteoglycan 5, Acidic leucine-rich EGF-like domain-containing brain protein, Neuroglycan C, CSPG5, CALEB, NGC
<b>Target/Specificity</b>	CSPG5 (NP_006565, 445 a.a. ~ 539 a.a) partial recombinant protein with GST tag. MW of the GST tag alone is 26 KDa.
<b>Dilution</b>	WB~~1:500~1000 E~~N/A
<b>Format</b>	Clear, colorless solution in phosphate buffered saline, pH 7.2 .
<b>Storage</b>	Store at -20°C or lower. Aliquot to avoid repeated freezing and thawing.
<b>Precautions</b>	CSPG5 Antibody (monoclonal) (M01) is for research use only and not for use in diagnostic or therapeutic procedures.

### References

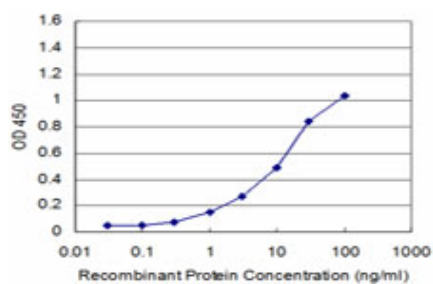
---

Identification of neuroglycan C and interacting partners as potential susceptibility genes for schizophrenia in a Southern Chinese population. So HC, et al. Am J Med Genet B Neuropsychiatr Genet, 2010 Jan 5. PMID 19367581. Neuroglycan C is a novel midkine receptor involved in process elongation of oligodendroglial precursor-like cells. Ichihara-Tanaka K, et al. J Biol Chem, 2006 Oct 13. PMID 16901907. Expression and identification of a new splice variant of neuroglycan C, a transmembrane chondroitin sulfate proteoglycan, in the human brain. Aono S, et al. J Neurosci Res, 2006 Jan. PMID 16299773. Neuroglycan C, a novel member of the neuregulin family. Kinugasa Y, et al. Biochem Biophys Res Commun, 2004 Sep 3. PMID 15358134. CALEB/NGC interacts with the Golgi-associated protein PIST. Hassel B, et al. J Biol Chem, 2003 Oct 10. PMID 12885772.

## Images



Antibody Reactive Against Recombinant Protein. Western Blot detection against Immunogen (36.19 KDa) .



Detection limit for recombinant GST tagged CSPG5 is approximately 1ng/ml as a capture antibody.

Please note: All products are 'FOR RESEARCH USE ONLY. NOT FOR USE IN DIAGNOSTIC OR THERAPEUTIC PROCEDURES'.