

CSRP1 Antibody (monoclonal) (M06)

Mouse monoclonal antibody raised against a partial recombinant CSRP1.

Catalog # AT1658a

Product Information

Application	WB, IF, E
Primary Accession	P21291
Other Accession	NM_004078
Reactivity	Human
Host	mouse
Clonality	monoclonal
Isotype	IgG2a Kappa
Clone Names	2A11
Calculated MW	20567

Additional Information

Gene ID	1465
Other Names	Cysteine and glycine-rich protein 1, Cysteine-rich protein 1, CRP, CRP1, Epididymis luminal protein 141, HEL-141, CSRP1, CSRP, CYRP
Target/Specificity	CSRP1 (NP_004069, 94 a.a. ~ 192 a.a) partial recombinant protein with GST tag. MW of the GST tag alone is 26 KDa.
Dilution	WB~~1:500~1000 IF~~1:50~200 E~~N/A
Format	Clear, colorless solution in phosphate buffered saline, pH 7.2 .
Storage	Store at -20°C or lower. Aliquot to avoid repeated freezing and thawing.
Precautions	CSRP1 Antibody (monoclonal) (M06) is for research use only and not for use in diagnostic or therapeutic procedures.

Background

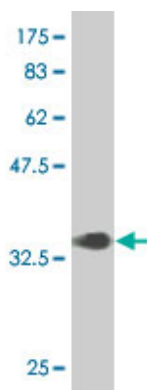
This gene encodes a member of the cysteine-rich protein (CSRP) family. This gene family includes a group of LIM domain proteins, which may be involved in regulatory processes important for development and cellular differentiation. The LIM/double zinc-finger motif found in this gene product occurs in proteins with critical functions in gene regulation, cell growth, and somatic differentiation. Alternatively spliced transcript variants have been described.

References

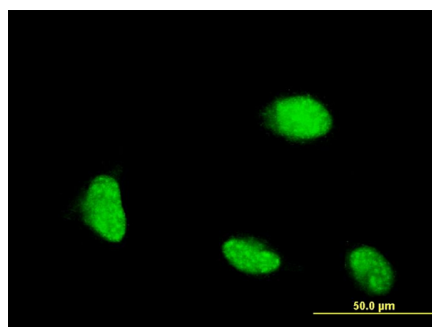
Ultraviolet B radiation regulates cysteine-rich protein 1 in human keratinocytes. Latonen L, et al.

Photodermatol Photoimmunol Photomed, 2010 Apr. PMID 20415737. Personalized smoking cessation: interactions between nicotine dose, dependence and quit-success genotype score. Rose JE, et al. Mol Med, 2010 Jul-Aug. PMID 20379614. Hypomethylation of WNT5A, CRIP1 and S100P in prostate cancer. Wang Q, et al. Oncogene, 2007 Oct 4. PMID 17486081. Methylation status of genes upregulated by demethylating agent 5-aza-2'-deoxycytidine in hepatocellular carcinoma. Hirasawa Y, et al. Oncology, 2006. PMID 17341888. Global, in vivo, and site-specific phosphorylation dynamics in signaling networks. Olsen JV, et al. Cell, 2006 Nov 3. PMID 17081983.

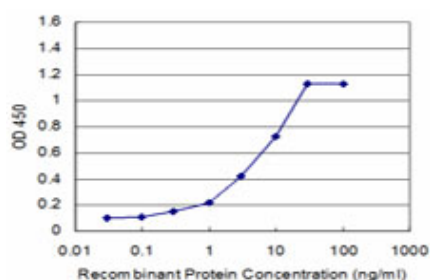
Images



Antibody Reactive Against Recombinant Protein. Western Blot detection against Immunogen (36.63 KDa) .



Immunofluorescence of monoclonal antibody to CSRP1 on HeLa cell . [antibody concentration 10 ug/ml]



Detection limit for recombinant GST tagged CSRP1 is approximately 0.3ng/ml as a capture antibody.

Please note: All products are 'FOR RESEARCH USE ONLY. NOT FOR USE IN DIAGNOSTIC OR THERAPEUTIC PROCEDURES'.