

CSTB Antibody (monoclonal) (M01)

Mouse monoclonal antibody raised against a full length recombinant CSTB.

Catalog # AT1661a

Product Information

Application	WB, IHC, E
Primary Accession	P04080
Other Accession	BC003370.1
Reactivity	Human
Host	mouse
Clonality	monoclonal
Isotype	IgG1 kappa
Clone Names	M1-C1
Calculated MW	11140

Additional Information

Gene ID	1476
Other Names	Cystatin-B, CPI-B, Liver thiol proteinase inhibitor, Stefin-B, CSTB, CST6, STFB
Target/Specificity	CSTB (AAH03370.1, 1 a.a. ~ 98 a.a) full-length recombinant protein with GST tag. MW of the GST tag alone is 26 KDa.
Dilution	WB~~1:500~1000 IHC~~1:100~500 E~~N/A
Format	Clear, colorless solution in phosphate buffered saline, pH 7.2 .
Storage	Store at -20°C or lower. Aliquot to avoid repeated freezing and thawing.
Precautions	CSTB Antibody (monoclonal) (M01) is for research use only and not for use in diagnostic or therapeutic procedures.

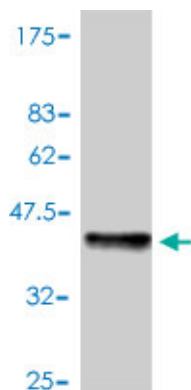
Background

The cystatin superfamily encompasses proteins that contain multiple cystatin-like sequences. Some of the members are active cysteine protease inhibitors, while others have lost or perhaps never acquired this inhibitory activity. There are three inhibitory families in the superfamily, including the type 1 cystatins (stefins), type 2 cystatins and kininogens. This gene encodes a stefin that functions as an intracellular thiol protease inhibitor. The protein is able to form a dimer stabilized by noncovalent forces, inhibiting papain and cathepsins L, H and B. The protein is thought to play a role in protecting against the proteases leaking from lysosomes. Evidence indicates that mutations in this gene are responsible for the primary defects in patients with progressive myoclonic epilepsy (EPM1).

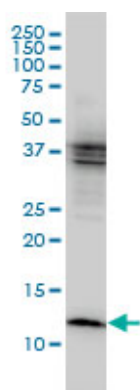
References

Variation at the NFATC2 Locus Increases the Risk of Thiazolinedinedione-Induced Edema in the Diabetes REduction Assessment with ramipril and rosiglitazone Medication (DREAM) Study. Bailey SD, et al. Diabetes Care, 2010 Jul 13. PMID 20628086. Intracellular aggregation of human stefin B: confocal and electron microscopy study. Ceru S, et al. Biol Cell, 2010 Mar 17. PMID 20078424. Stefin B interacts with histones and cathepsin L in the nucleus. Ceru S, et al. J Biol Chem, 2010 Mar 26. PMID 20075068. Interaction between oligomers of stefin B and amyloid-beta in vitro and in cells. Skerget K, et al. J Biol Chem, 2010 Jan 29. PMID 19955183. Gene-centric association signals for lipids and apolipoproteins identified via the HumanCVD BeadChip. Talmud PJ, et al. Am J Hum Genet, 2009 Nov. PMID 19913121.

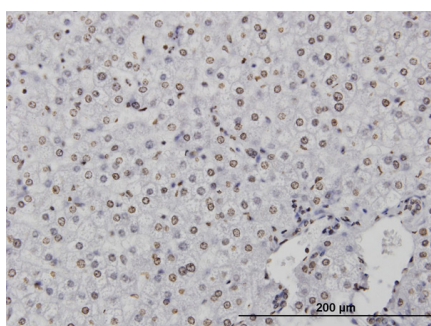
Images



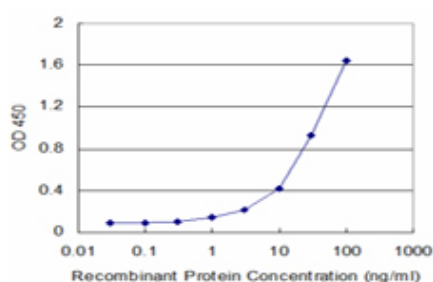
Antibody Reactive Against Recombinant Protein. Western Blot detection against Immunogen (36.52 KDa) .



CSTB monoclonal antibody (M01), clone M1-C1 Western Blot analysis of CSTB expression in MCF-7 (Cat # AT1661a)



Immunoperoxidase of monoclonal antibody to CSTB on formalin-fixed paraffin-embedded human liver. [antibody concentration 3 ug/ml]



Detection limit for recombinant GST tagged CSTB is approximately 1 ng/ml as a capture antibody.

Please note: All products are 'FOR RESEARCH USE ONLY. NOT FOR USE IN DIAGNOSTIC OR THERAPEUTIC PROCEDURES'.