

CSTF3 Antibody (monoclonal) (M01)

Mouse monoclonal antibody raised against a full length recombinant CSTF3.

Catalog # AT1663a

Product Information

Application	WB, IHC, IF, E
Primary Accession	Q12996
Other Accession	BC009792
Reactivity	Human
Host	mouse
Clonality	monoclonal
Isotype	IgG1 kappa
Clone Names	1D4
Calculated MW	82922

Additional Information

Gene ID	1479
Other Names	Cleavage stimulation factor subunit 3, CF-1 77 kDa subunit, Cleavage stimulation factor 77 kDa subunit, CSTF 77 kDa subunit, CstF-77, CSTF3
Target/Specificity	CSTF3 (AAH09792, 1 a.a. ~ 103 a.a) full-length recombinant protein with GST tag. MW of the GST tag alone is 26 KDa.
Dilution	WB~~1:500~1000 IHC~~1:100~500 IF~~1:50~200 E~~N/A
Format	Clear, colorless solution in phosphate buffered saline, pH 7.2 .
Storage	Store at -20°C or lower. Aliquot to avoid repeated freezing and thawing.
Precautions	CSTF3 Antibody (monoclonal) (M01) is for research use only and not for use in diagnostic or therapeutic procedures.

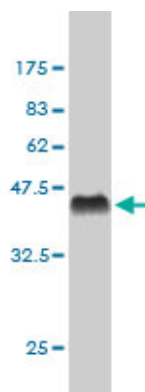
Background

The protein encoded by this gene is one of three (including CSTF1 and CSTF2) cleavage stimulation factors that combine to form the cleavage stimulation factor complex (CSTF). This complex is involved in the polyadenylation and 3' end cleavage of pre-mRNAs. The encoded protein functions as a homodimer and interacts directly with both CSTF1 and CSTF2 in the CSTF complex. Alternative splicing results in multiple transcript variants encoding different isoforms.

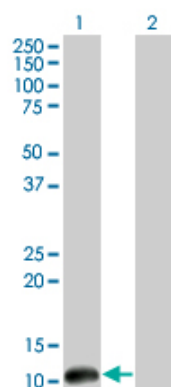
References

1. Polyadenylation site-specific differences in the activity of the neuronal ?CstF-64 protein in PC-12

Images

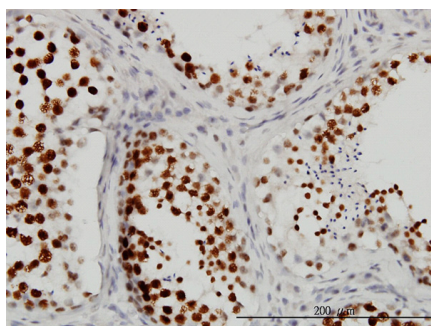


Antibody Reactive Against Recombinant Protein.Western Blot detection against Immunogen (37.07 KDa) .

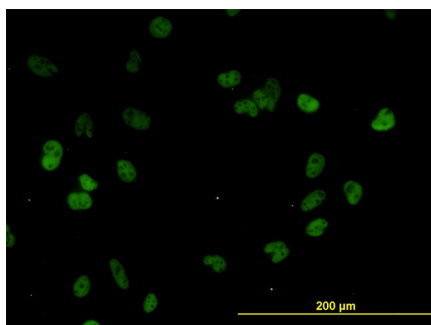


Western Blot analysis of CSTF3 expression in transfected 293T cell line by CSTF3 monoclonal antibody (M01), clone 1D4.

Lane 1: CSTF3 transfected lysate(11.44 KDa).
Lane 2: Non-transfected lysate.

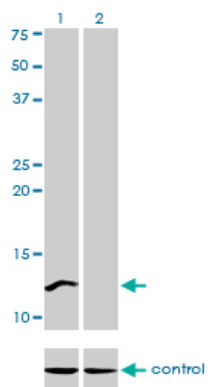
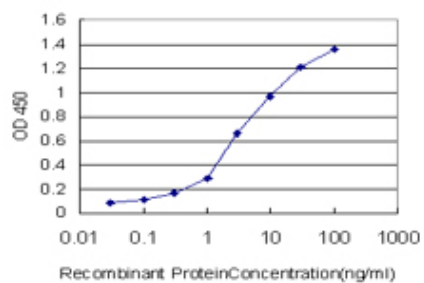


Immunoperoxidase of monoclonal antibody to CSTF3 on formalin-fixed paraffin-embedded human testis. [antibody concentration 3 ug/ml]



Immunofluorescence of monoclonal antibody to CSTF3 on HeLa cell. [antibody concentration 10 ug/ml]

Detection limit for recombinant GST tagged CSTF3 is approximately 0.1ng/ml as a capture antibody.



Western blot analysis of CSTF3 over-expressed 293 cell line, cotransfected with CSTF3 Validated Chimera RNAi (Cat # AT1663a)

Please note: All products are 'FOR RESEARCH USE ONLY. NOT FOR USE IN DIAGNOSTIC OR THERAPEUTIC PROCEDURES'.