

CTL2 Antibody (monoclonal) (M01)

Mouse monoclonal antibody raised against a partial recombinant CTL2.

Catalog # AT1669a

Product Information

Application	WB, IHC, E
Primary Accession	Q8IWA5
Other Accession	BC040556
Reactivity	Human
Host	Mouse
Clonality	monoclonal
Isotype	IgG1 Kappa
Clone Names	3D11
Calculated MW	80124

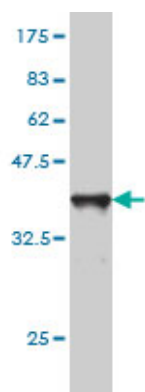
Additional Information

Gene ID	57153
Other Names	Choline transporter-like protein 2, Solute carrier family 44 member 2, SLC44A2, CTL2
Target/Specificity	CTL2 (AAH40556, 123 a.a. ~ 230 a.a) partial recombinant protein with GST tag. MW of the GST tag alone is 26 KDa.
Dilution	WB~~1:500~1000 IHC~~1:100~500 E~~N/A
Format	Clear, colorless solution in phosphate buffered saline, pH 7.2 .
Storage	Store at -20°C or lower. Aliquot to avoid repeated freezing and thawing.
Precautions	CTL2 Antibody (monoclonal) (M01) is for research use only and not for use in diagnostic or therapeutic procedures.

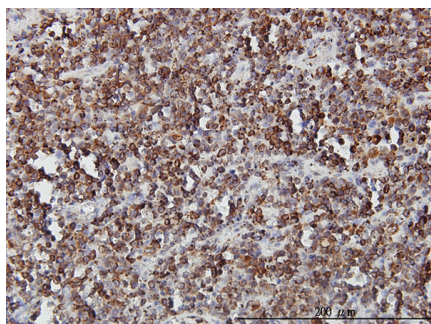
References

1.Functional analysis of [methyl-3H]choline uptake in glioblastoma cells: influence of anti-cancer and central nervous system drugs.Taguchi C, Inazu M, Saiki I, Yara M, Hara N, Yamanaka T, Uchino H.Biochem Pharmacol. 2014 Feb 12. pii: S0006-2952(14)00072-0.2.Anti-human neutrophil antigen-3a induced transfusion-related acute lung injury in mice by direct disturbance of lung endothelial cells.Bayat B, Tjahjono Y, Sydykov A, Werth S, Hippenstiel S, Weissmann N, Sachs UJ, Santoso S.Arterioscler Thromb Vasc Biol. 2013 Nov;33(11):2538-48. doi: 10.1161/ATVBAHA.113.301206. Epub 2013 Sep 5.3.Molecular and functional characterization of choline transporter in rat renal tubule epithelial NRK-52E cells.Yabuki M, Inazu M, Yamada T, Tajima H, Matsumiya T.Arch Biochem Biophys. 2009 May 1;485(1):88-96. Epub 2009 Feb 21.

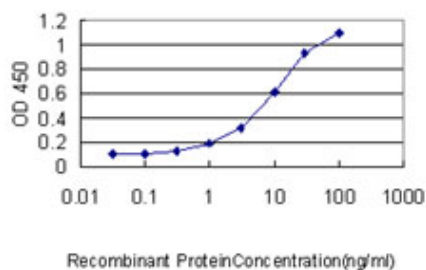
Images



Antibody Reactive Against Recombinant Protein. Western Blot detection against Immunogen (37.62 KDa) .



Immunoperoxidase of monoclonal antibody to SLC44A2 on formalin-fixed paraffin-embedded human lymphoma. [antibody concentration 3 μ g/ml]



Detection limit for recombinant GST tagged SLC44A2 is approximately 0.3ng/ml as a capture antibody.

Please note: All products are 'FOR RESEARCH USE ONLY. NOT FOR USE IN DIAGNOSTIC OR THERAPEUTIC PROCEDURES'.