

CTSD Antibody (monoclonal) (M01)

Mouse monoclonal antibody raised against a full length recombinant CTSD.

Catalog # AT1680a

Product Information

Application	WB, IHC, IP, E
Primary Accession	P07339
Other Accession	BC016320
Reactivity	Human
Host	mouse
Clonality	monoclonal
Isotype	IgG1 kappa
Clone Names	3F12-1B9
Calculated MW	44552

Additional Information

Gene ID	1509
Other Names	Cathepsin D, Cathepsin D light chain, Cathepsin D heavy chain, CTSD, CPSD
Target/Specificity	CTSD (AAH16320, 26 a.a. ~ 412 a.a) full-length recombinant protein with GST tag. MW of the GST tag alone is 26 KDa.
Dilution	WB~~1:500~1000 IHC~~1:100~500 IP~~N/A E~~N/A
Format	Clear, colorless solution in phosphate buffered saline, pH 7.2 .
Storage	Store at -20°C or lower. Aliquot to avoid repeated freezing and thawing.
Precautions	CTSD Antibody (monoclonal) (M01) is for research use only and not for use in diagnostic or therapeutic procedures.

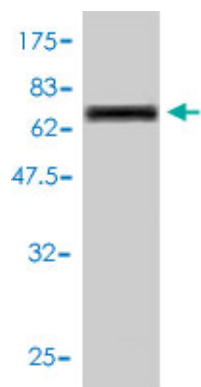
Background

This gene encodes a lysosomal aspartyl protease composed of a dimer of disulfide-linked heavy and light chains, both produced from a single protein precursor. This proteinase, which is a member of the peptidase C1 family, has a specificity similar to but narrower than that of pepsin A. Transcription of this gene is initiated from several sites, including one which is a start site for an estrogen-regulated transcript. Mutations in this gene are involved in the pathogenesis of several diseases, including breast cancer and possibly Alzheimer disease.

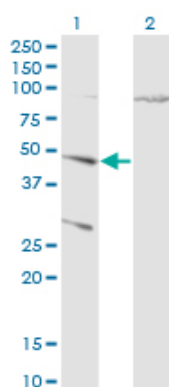
References

1.Characterization of the Human Gastric Fluid Proteome Reveals Distinct pH-Dependent Protein Profiles:

Images

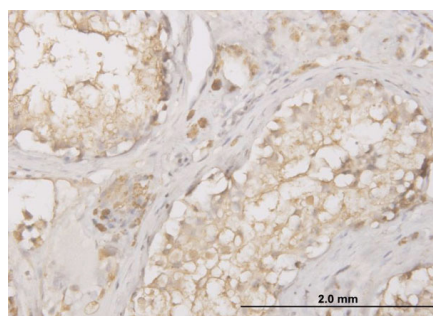


Antibody Reactive Against Recombinant Protein.Western Blot detection against Immunogen (71.06 KDa) .

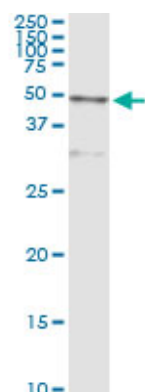


Western Blot analysis of CTSD expression in transfected 293T cell line by CTSD monoclonal antibody (M01), clone 3F12-1B9.

Lane 1: CTSD transfected lysate (Predicted MW: 44.6 KDa).
Lane 2: Non-transfected lysate.

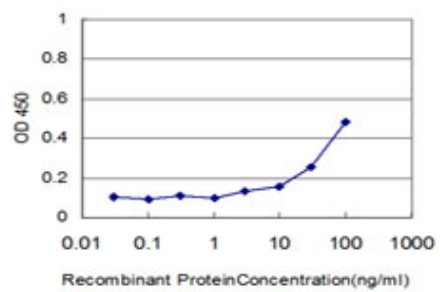


Immunoperoxidase of monoclonal antibody to CTSD on formalin-fixed paraffin-embedded human testis. [antibody concentration 1.5 ug/ml]



Immunoprecipitation of CTSD transfected lysate using anti-CTSD monoclonal antibody and Protein A Magnetic Bead ([U0007](#)), and immunoblotted with CTSD MaxPab rabbit polyclonal antibody.

Detection limit for recombinant GST tagged CTSD is approximately 3ng/ml as a capture antibody.



Please note: All products are 'FOR RESEARCH USE ONLY. NOT FOR USE IN DIAGNOSTIC OR THERAPEUTIC PROCEDURES'.