

CTSW Antibody (monoclonal) (M01)

Mouse monoclonal antibody raised against a full length recombinant CTSW.

Catalog # AT1682a

Product Information

Application	WB, E
Primary Accession	P56202
Other Accession	BC048255
Reactivity	Human
Host	mouse
Clonality	monoclonal
Isotype	IgG2a Kappa
Clone Names	4A8
Calculated MW	42120

Additional Information

Gene ID	1521
Other Names	Cathepsin W, 3422-, Lymphopain, CTSW
Target/Specificity	CTSW (AAH48255, 22 a.a. ~ 376 a.a) full-length recombinant protein with GST tag. MW of the GST tag alone is 26 KDa.
Dilution	WB~~1:500~1000 E~~N/A
Format	Clear, colorless solution in phosphate buffered saline, pH 7.2 .
Storage	Store at -20°C or lower. Aliquot to avoid repeated freezing and thawing.
Precautions	CTSW Antibody (monoclonal) (M01) is for research use only and not for use in diagnostic or therapeutic procedures.

Background

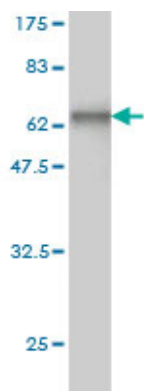
The protein encoded by this gene, a member of the peptidase C1 family, is a cysteine proteinase that may have a specific function in the mechanism or regulation of T-cell cytolytic activity. The encoded protein is found associated with the membrane inside the endoplasmic reticulum of natural killer and cytotoxic T-cells. Expression of this gene is up-regulated by interleukin-2.

References

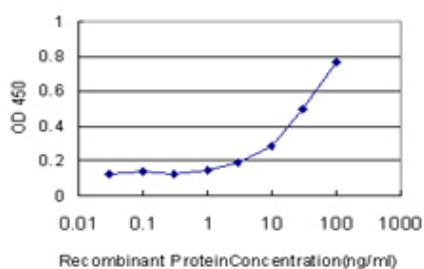
Cathepsin W expressed exclusively in CD8+ T cells and NK cells, is secreted during target cell killing but is not essential for cytotoxicity in human CTLs. Stoeckle C, et al. Exp Hematol, 2009 Feb. PMID 19100676. The status, quality, and expansion of the NIH full-length cDNA project: the Mammalian Gene Collection (MGC).

Gerhard DS, et al. Genome Res, 2004 Oct. PMID 15489334. Identification of a novel isoform predominantly expressed in gastric tissue and a triple-base pair polymorphism of the cathepsin W gene. Meinhardt C, et al. Biochem Biophys Res Commun, 2004 Sep 3. PMID 15358123. Signal peptide prediction based on analysis of experimentally verified cleavage sites. Zhang Z, et al. Protein Sci, 2004 Oct. PMID 15340161. Generation and initial analysis of more than 15,000 full-length human and mouse cDNA sequences. Strausberg RL, et al. Proc Natl Acad Sci U S A, 2002 Dec 24. PMID 12477932.

Images



Antibody Reactive Against Recombinant Protein. Western Blot detection against Immunogen (64.79 KDa) .



Detection limit for recombinant GST tagged CTSW is approximately 3ng/ml as a capture antibody.

Please note: All products are 'FOR RESEARCH USE ONLY. NOT FOR USE IN DIAGNOSTIC OR THERAPEUTIC PROCEDURES'.