

# CX3CR1 Antibody (monoclonal) (M01)

Mouse monoclonal antibody raised against a partial recombinant CX3CR1.

Catalog # AT1687a

## Product Information

---

<b>Application</b>	WB, E
<b>Primary Accession</b>	<a href="#">P49238</a>
<b>Other Accession</b>	<a href="#">BC028078</a>
<b>Reactivity</b>	Human
<b>Host</b>	Mouse
<b>Clonality</b>	monoclonal
<b>Isotype</b>	IgG2a Kappa
<b>Clone Names</b>	2B11
<b>Calculated MW</b>	40396

## Additional Information

---

<b>Gene ID</b>	1524
<b>Other Names</b>	CX3C chemokine receptor 1, C-X3-C CKR-1, CX3CR1, Beta chemokine receptor-like 1, CMK-BRL-1, CMK-BRL1, Fractalkine receptor, G-protein coupled receptor 13, V28, CX3CR1, CMKBRL1, GPR13
<b>Target/Specificity</b>	CX3CR1 (AAH28078, 1 a.a. ~ 36 a.a) partial recombinant protein with GST tag. MW of the GST tag alone is 26 KDa.
<b>Dilution</b>	WB~~1:500~1000 E~~N/A
<b>Format</b>	Clear, colorless solution in phosphate buffered saline, pH 7.2 .
<b>Storage</b>	Store at -20°C or lower. Aliquot to avoid repeated freezing and thawing.
<b>Precautions</b>	CX3CR1 Antibody (monoclonal) (M01) is for research use only and not for use in diagnostic or therapeutic procedures.

## Background

---

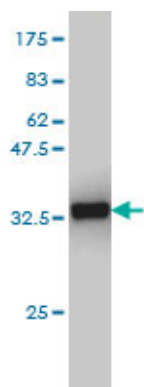
Fractalkine is a transmembrane protein and chemokine involved in the adhesion and migration of leukocytes. The protein encoded by this gene is a receptor for fractalkine. The encoded protein also is a coreceptor for HIV-1, and some variations in this gene lead to increased susceptibility to HIV-1 infection and rapid progression to AIDS. Four transcript variants encoding two different isoforms have been found for this gene.

## References

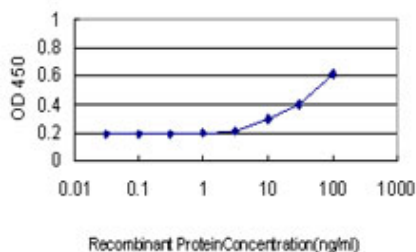
---

1.The involvement of the fractalkine receptor in the transmigration of neuroblastoma cells through bone-marrow endothelial cells.Nevo I, Sagi-Assif O, Meshel T, Ben-Baruch A, Johrer K, Greil R, Trejo LE, Kharenko O, Feinmesser M, Yron I, Witz IP.Cancer Lett. 2009 Jan 8;273(1):127-39. Epub 2008 Sep 7.

## Images



Antibody Reactive Against Recombinant Protein.Western Blot detection against Immunogen (29.7 KDa) .



Detection limit for recombinant GST tagged CX3CR1 is approximately 10ng/ml as a capture antibody.

Please note: All products are 'FOR RESEARCH USE ONLY. NOT FOR USE IN DIAGNOSTIC OR THERAPEUTIC PROCEDURES'.