

CXCL5 Antibody (monoclonal) (M05)

Mouse monoclonal antibody raised against a full length recombinant CXCL5.

Catalog # AT1694a

Product Information

Application	WB, IHC
Primary Accession	P42830
Other Accession	BC008376
Reactivity	Human
Host	mouse
Clonality	monoclonal
Isotype	IgG1 Kappa
Clone Names	S5
Calculated MW	11972

Additional Information

Gene ID	6374
Other Names	C-X-C motif chemokine 5, ENA-78(1-78), Epithelial-derived neutrophil-activating protein 78, Neutrophil-activating peptide ENA-78, Small-inducible cytokine B5, ENA-78(8-78), ENA-78(9-78), CXCL5, ENA78, SCYB5
Target/Specificity	CXCL5 (AAH08376, 1 a.a. ~ 114 a.a) full-length recombinant protein with GST tag. MW of the GST tag alone is 26 KDa.
Dilution	WB~~1:500~1000 IHC~~1:100~500
Format	Clear, colorless solution in phosphate buffered saline, pH 7.2 .
Storage	Store at -20°C or lower. Aliquot to avoid repeated freezing and thawing.
Precautions	CXCL5 Antibody (monoclonal) (M05) is for research use only and not for use in diagnostic or therapeutic procedures.

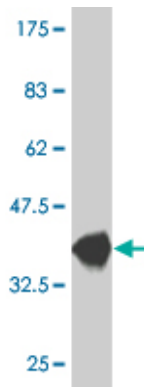
Background

The protein encoded by this gene is an inflammatory chemokine that belongs to the CXC chemokine family. This chemokine is produced concomitantly with interleukin-8 (IL8) in response to stimulation with either interleukin-1 (IL1) or tumor necrosis factor-alpha (TNFA). This chemokine is a potent chemotaxin involved in neutrophil activation.

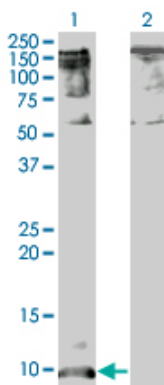
References

1.CXCL5 knockdown expression inhibits human bladder cancer T24 cells proliferation and migration.Zheng J, Zhu X, Zhang J Biochem Biophys Res Commun. 2014 Feb 26. pii: S0006-291X(14)00215-0. doi: 10.1016/j.bbrc.2014.01.172.2.Overexpression of CXCL5 mediates neutrophil infiltration and indicates poor prognosis for hepatocellular carcinoma.Zhou SL, Dai Z, Zhou ZJ, Wang XY, Yang GH, Wang Z, Huang XW, Fan J, Zhou J.Hepatology. 2012 Jun 18. doi: 10.1002/hep.25907.3.CXCL5 contributes to tumour metastasis and recurrence of intrahepatic cholangiocarcinoma by recruiting infiltrative intratumoural neutrophils.Zhou SL, Dai Z, Zhou ZJ, Chen Q, Wang Z, Xiao YS, Hu ZQ, Huang XY, Yang GH, Shi YH, Qiu SJ, Fan J, Zhou J.Carcinogenesis. 2013 Nov 30.

Images

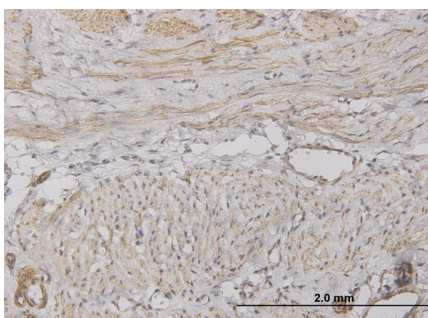


Antibody Reactive Against Recombinant Protein.Western Blot detection against Immunogen (38.28 KDa) .



Western Blot analysis of CXCL5 expression in transfected 293T cell line by CXCL5 monoclonal antibody (M05), clone 2A9.

Lane 1: CXCL5 transfected lysate(12 KDa).
Lane 2: Non-transfected lysate.



Immunoperoxidase of monoclonal antibody to CXCL5 on formalin-fixed paraffin-embedded human smooth muscle. [antibody concentration 0.7 ug/ml]

Citations

- [CXCL5 is a potential diagnostic and prognostic marker for bladder cancer patients.](#)

Please note: All products are 'FOR RESEARCH USE ONLY. NOT FOR USE IN DIAGNOSTIC OR THERAPEUTIC PROCEDURES'.