

CYorf15B Antibody (monoclonal) (M01)

Mouse monoclonal antibody raised against a partial recombinant CYorf15B.

Catalog # AT1700a

Product Information

Application	WB, E
Primary Accession	Q9BZA4
Other Accession	NM_032576
Reactivity	Human
Host	mouse
Clonality	monoclonal
Isotype	IgG1 Kappa
Clone Names	2F5

Additional Information

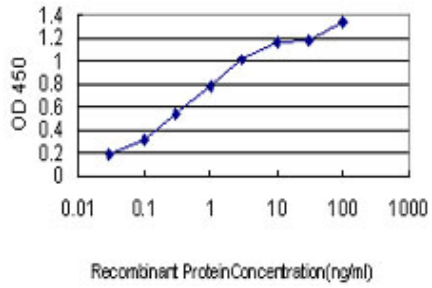
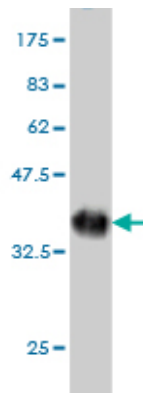
Other Names	chromosome Y open reading frame 15B
Target/Specificity	CYorf15B (NP_115965, 82 a.a. ~ 180 a.a) partial recombinant protein with GST tag. MW of the GST tag alone is 26 KDa.
Dilution	WB~~1:500~1000 E~~N/A
Format	Clear, colorless solution in phosphate buffered saline, pH 7.2 .
Storage	Store at -20°C or lower. Aliquot to avoid repeated freezing and thawing.
Precautions	CYorf15B Antibody (monoclonal) (M01) is for research use only and not for use in diagnostic or therapeutic procedures.

References

Identification of genes related to Parkinson's disease using expressed sequence tags. Kim JM, et al. DNA Res, 2006 Dec 31. PMID 17213182. Diversification of transcriptional modulation: large-scale identification and characterization of putative alternative promoters of human genes. Kimura K, et al. Genome Res, 2006 Jan. PMID 16344560. The male-specific region of the human Y chromosome is a mosaic of discrete sequence classes. Skaletsky H, et al. Nature, 2003 Jun 19. PMID 12815422. Generation and initial analysis of more than 15,000 full-length human and mouse cDNA sequences. Strausberg RL, et al. Proc Natl Acad Sci U S A, 2002 Dec 24. PMID 12477932.

Images

Antibody Reactive Against Recombinant Protein. Western Blot detection against Immunogen (36.63 KDa) .



Detection limit for recombinant GST tagged CYorf15B is approximately 0.03ng/ml as a capture antibody.

Please note: All products are 'FOR RESEARCH USE ONLY. NOT FOR USE IN DIAGNOSTIC OR THERAPEUTIC PROCEDURES'.