

CYP2J2 Antibody (monoclonal) (M01)

Mouse monoclonal antibody raised against a partial recombinant CYP2J2.

Catalog # AT1704a

Product Information

Application	WB, E
Primary Accession	P51589
Other Accession	NM_000775
Reactivity	Human
Host	mouse
Clonality	monoclonal
Isotype	IgG1 Kappa
Clone Names	2D10
Calculated MW	57611

Additional Information

Gene ID	1573
Other Names	Cytochrome P450 2J2, Arachidonic acid epoxygenase, CYP11J2, CYP2J2
Target/Specificity	CYP2J2 (NP_000766, 408 a.a. ~ 498 a.a) partial recombinant protein with GST tag. MW of the GST tag alone is 26 KDa.
Dilution	WB~~1:500~1000 E~~N/A
Format	Clear, colorless solution in phosphate buffered saline, pH 7.2 .
Storage	Store at -20°C or lower. Aliquot to avoid repeated freezing and thawing.
Precautions	CYP2J2 Antibody (monoclonal) (M01) is for research use only and not for use in diagnostic or therapeutic procedures.

Background

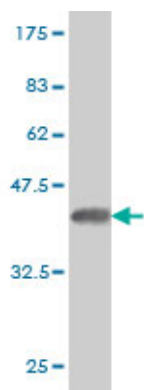
This gene encodes a member of the cytochrome P450 superfamily of enzymes. The cytochrome P450 proteins are monooxygenases which catalyze many reactions involved in drug metabolism and synthesis of cholesterol, steroids and other lipids. This protein localizes to the endoplasmic reticulum and is thought to be the predominant enzyme responsible for epoxidation of endogenous arachidonic acid in cardiac tissue.

References

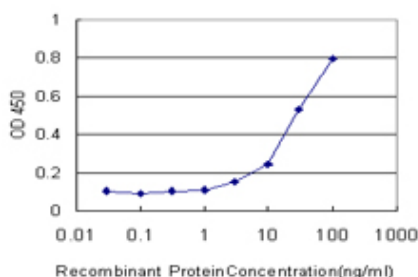
1.CYP2J2 Expression and Circulating Epoxyeicosatrienoic Metabolites in Preeclampsia.Herse F, Lamarca B, Hubel CA, Kaartokallio T, Lokki AI, Ekholm E, Laivuori H, Gauster M, Huppertz B, Sugulle M, Ryan MJ, Novotny S, Brewer J, Park JK, Kacik M, Hoyer J, Verlohren S, Wallukat G, Rothe M, Luft FC, Muller DN, Schunck WH,

Staff AC, Dechend R. *Circulation*. 2012 Dec 18;126(25):2990-9. doi: 10.1161/CIRCULATIONAHA.112.127340. Epub 2012 Nov 15. 2. Identifying a Selective Substrate and Inhibitor Pair for the Evaluation of CYP2J2 Activity. Lee CA, Jones JP 3rd, Katayama J, Kaspera R, Jiang Y, Freiwald S, Smith E, Walker GS, Totah RA. *Drug Metab Dispos*. 2012 May;40(5):943-51. Epub 2012 Feb 10. 3. Detection of EETs and HETEs-generating Cytochrome P450 Enzymes and the Effects of their Metabolites on Myometrial and Vascular Function. Pearson T, Warren AY, Barrett DA, Khan RN. *Am J Physiol Endocrinol Metab*. 2009 Sep;297(3):E647-56. Epub 2009 Jun 23.

Images



Antibody Reactive Against Recombinant Protein. Western Blot detection against Immunogen (35.75 KDa) .



Detection limit for recombinant GST tagged CYP2J2 is approximately 3ng/ml as a capture antibody.

Please note: All products are 'FOR RESEARCH USE ONLY. NOT FOR USE IN DIAGNOSTIC OR THERAPEUTIC PROCEDURES'.