

# DDEF1 Antibody (monoclonal) (M01)

Mouse monoclonal antibody raised against a partial recombinant DDEF1.

Catalog # AT1729a

## Product Information

---

<b>Application</b>	WB, IF, E
<b>Primary Accession</b>	<a href="#">Q9ULH1</a>
<b>Other Accession</b>	<a href="#">NM_018482</a>
<b>Reactivity</b>	Human, Rat
<b>Host</b>	mouse
<b>Clonality</b>	monoclonal
<b>Isotype</b>	IgG2a Kappa
<b>Clone Names</b>	2G7
<b>Calculated MW</b>	125498

## Additional Information

---

<b>Gene ID</b>	50807
<b>Other Names</b>	Arf-GAP with SH3 domain, ANK repeat and PH domain-containing protein 1, 130 kDa phosphatidylinositol 4, 5-bisphosphate-dependent ARF1 GTPase-activating protein, ADP-ribosylation factor-directed GTPase-activating protein 1, ARF GTPase-activating protein 1, Development and differentiation-enhancing factor 1, DEF-1, Differentiation-enhancing factor 1, PIP2-dependent ARF1 GAP, ASAP1, DDEF1, KIAA1249
<b>Target/Specificity</b>	DDEF1 (NP_060952, 1030 a.a. ~ 1129 a.a) partial recombinant protein with GST tag. MW of the GST tag alone is 26 KDa.
<b>Dilution</b>	WB~~1:500~1000 IF~~1:50~200 E~~N/A
<b>Format</b>	Clear, colorless solution in phosphate buffered saline, pH 7.2 .
<b>Storage</b>	Store at -20°C or lower. Aliquot to avoid repeated freezing and thawing.
<b>Precautions</b>	DDEF1 Antibody (monoclonal) (M01) is for research use only and not for use in diagnostic or therapeutic procedures.

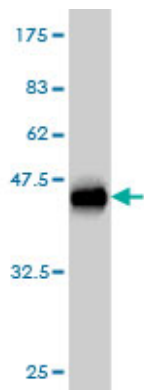
## References

---

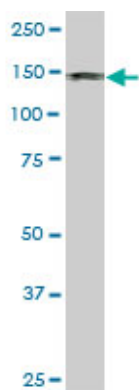
ASAP1 promotes tumor cell motility and invasiveness, stimulates metastasis formation in vivo, and correlates with poor survival in colorectal cancer patients. M?ller T, et al. Oncogene, 2010 Apr 22. PMID 20154719.Genome-wide association study identifies new multiple sclerosis susceptibility loci on chromosomes 12 and 20. Australia and New Zealand Multiple Sclerosis Genetics Consortium (ANZgene). Nat Genet, 2009 Jul. PMID 19525955.Identification of interaction partners for individual SH3 domains of Fas

ligand associated members of the PCH protein family in T lymphocytes. Linkermann A, et al. Biochim Biophys Acta, 2009 Feb. PMID 19041431. Autoinhibition of Arf GTPase-activating protein activity by the BAR domain in ASAP1. Jian X, et al. J Biol Chem, 2009 Jan 16. PMID 19017632. Arf GTPase-activating protein ASAP1 interacts with Rab11 effector FIP3 and regulates pericentrosomal localization of transferrin receptor-positive recycling endosome. Inoue H, et al. Mol Biol Cell, 2008 Oct. PMID 18685082.

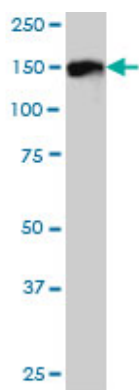
## Images



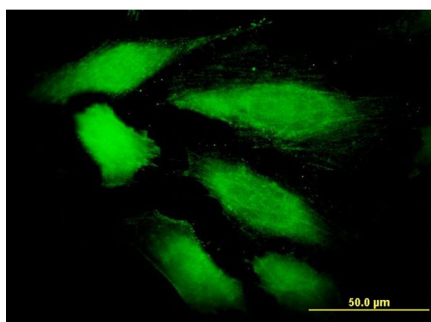
Antibody Reactive Against Recombinant Protein. Western Blot detection against Immunogen (36.74 kDa) .



DDEF1 monoclonal antibody (M01), clone 2G7. Western Blot analysis of DDEF1 expression in PC-12 ( (Cat # AT1729a )

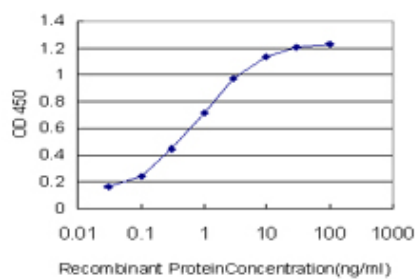


DDEF1 monoclonal antibody (M01), clone 2G7 Western Blot analysis of DDEF1 expression in IMR-32 ( (Cat # AT1729a )



Immunofluorescence of monoclonal antibody to DDEF1 on HeLa cell. [antibody concentration 10 ug/ml]

Detection limit for recombinant GST tagged DDEF1 is



approximately 0.03ng/ml as a capture antibody.

Please note: All products are 'FOR RESEARCH USE ONLY. NOT FOR USE IN DIAGNOSTIC OR THERAPEUTIC PROCEDURES'.