

## DEF6 Antibody (monoclonal) (M01)

Mouse monoclonal antibody raised against a full length recombinant DEF6.

Catalog # AT1749a

### Product Information

---

<b>Application</b>	WB, IHC, IP, E
<b>Primary Accession</b>	<a href="#">Q9H4E7</a>
<b>Other Accession</b>	<a href="#">BC017504</a>
<b>Reactivity</b>	Human
<b>Host</b>	mouse
<b>Clonality</b>	monoclonal
<b>Isotype</b>	IgG2a Kappa
<b>Clone Names</b>	1F2
<b>Calculated MW</b>	73910

### Additional Information

---

<b>Gene ID</b>	50619
<b>Other Names</b>	Differentially expressed in FDCP 6 homolog, DEF-6, IRF4-binding protein, DEF6, IBP
<b>Target/Specificity</b>	DEF6 (AAH17504, 1 a.a. ~ 336 a.a) full-length recombinant protein with GST tag. MW of the GST tag alone is 26 KDa.
<b>Dilution</b>	WB~~1:500~1000 IHC~~1:100~500 IP~~N/A E~~N/A
<b>Format</b>	Clear, colorless solution in phosphate buffered saline, pH 7.2 .
<b>Storage</b>	Store at -20°C or lower. Aliquot to avoid repeated freezing and thawing.
<b>Precautions</b>	DEF6 Antibody (monoclonal) (M01) is for research use only and not for use in diagnostic or therapeutic procedures.

### Background

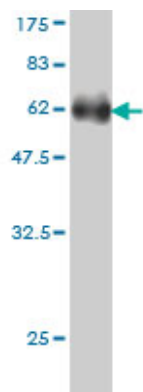
---

DEF6, or IBP, is a guanine nucleotide exchange factor (GEF) for RAC (MIM 602048) and CDC42 (MIM 116952) that is highly expressed in B and T cells (Gupta et al., 2003 [PubMed 12923183]).[supplied by OMIM]

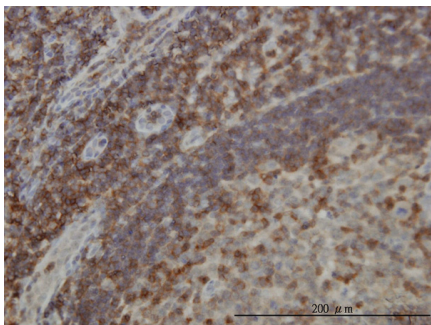
### References

---

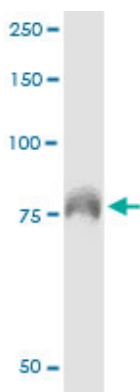
1.Def-6, a Novel Regulator of Small GTPases in Podocytes, Acts Downstream of Atypical Protein Kinase C (aPKC) ?/??.Worthmann K, Leitges M, Teng B, Sestu M, Tossidou I, Samson T, Haller H, Huber TB, Schiffer MAm J Pathol. 2013 Oct 3. pii: S0002-9440(13)00614-7. doi: 10.1016/j.ajpath.2013.08.026.



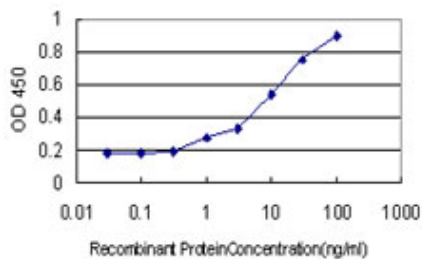
Antibody Reactive Against Recombinant Protein.Western Blot detection against Immunogen (62.7 KDa) .



Immunoperoxidase of monoclonal antibody to DEF6 on formalin-fixed paraffin-embedded human lymph node [antibody concentration 3 ug/ml]



Immunoprecipitation of DEF6 transfected lysate using anti-DEF6 monoclonal antibody and Protein A Magnetic Bead ([U0007](#)), and immunoblotted with DEF6 monoclonal antibody.



Detection limit for recombinant GST tagged DEF6 is approximately 1ng/ml as a capture antibody.

Please note: All products are 'FOR RESEARCH USE ONLY. NOT FOR USE IN DIAGNOSTIC OR THERAPEUTIC PROCEDURES'.