

DLD Antibody (monoclonal) (M02)

Mouse monoclonal antibody raised against a full length recombinant DLD.

Catalog # AT1770a

Product Information

Application	WB, IHC, E
Primary Accession	P09622
Other Accession	BC018696
Reactivity	Human
Host	mouse
Clonality	monoclonal
Isotype	IgG3 Kappa
Clone Names	3C1
Calculated MW	54177

Additional Information

Gene ID	1738
Other Names	Dihydrolipoyl dehydrogenase, mitochondrial, Dihydrolipoamide dehydrogenase, Glycine cleavage system L protein, DLD, GCSL, LAD, PHE3
Target/Specificity	DLD (AAH18696, 1 a.a. ~ 509 a.a) full-length recombinant protein with GST tag. MW of the GST tag alone is 26 KDa.
Dilution	WB~~1:500~1000 IHC~~1:100~500 E~~N/A
Format	Clear, colorless solution in phosphate buffered saline, pH 7.2 .
Storage	Store at -20°C or lower. Aliquot to avoid repeated freezing and thawing.
Precautions	DLD Antibody (monoclonal) (M02) is for research use only and not for use in diagnostic or therapeutic procedures.

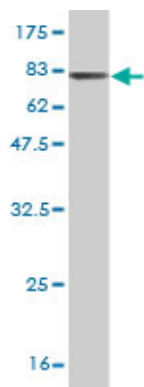
Background

This gene encodes the L protein of the mitochondrial glycine cleavage system. The L protein, also named dihydrolipoamide dehydrogenase, is also a component of the pyruvate dehydrogenase complex, the alpha-ketoglutarate dehydrogenase complex, and the branched-chain alpha-keto acid dehydrogenase complex. Mutations in this gene have been identified in patients with E3-deficient maple syrup urine disease and lipoamide dehydrogenase deficiency.

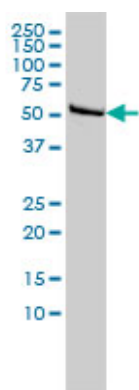
References

- 1.Quantitative Analysis of HIV-1 Infected CD4+ Cell Proteome: Dysregulated Cell Cycle Progression and

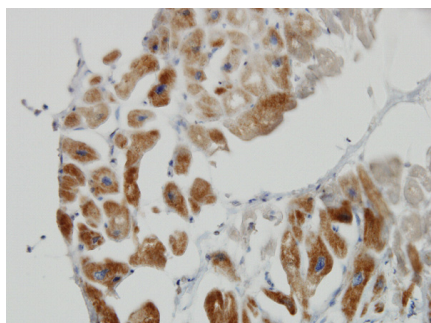
Images



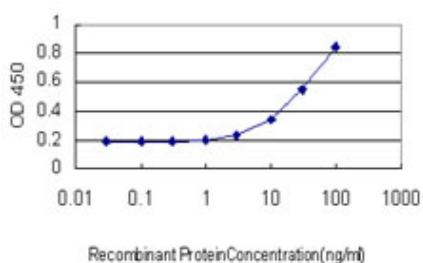
Antibody Reactive Against Recombinant Protein.Western Blot detection against Immunogen (81.73 KDa) .



DLD monoclonal antibody (M02), clone 3C1 Western Blot analysis of DLD expression in Hela ((Cat # AT1770a)



Immunoperoxidase of monoclonal antibody to DLD on formalin-fixed paraffin-embedded human heart. [antibody concentration 3 ug/ml]



Detection limit for recombinant GST tagged DLD is approximately 1 ng/ml as a capture antibody.

Please note: All products are 'FOR RESEARCH USE ONLY. NOT FOR USE IN DIAGNOSTIC OR THERAPEUTIC PROCEDURES'.