

DLX1 Antibody (monoclonal) (M01)

Mouse monoclonal antibody raised against a partial recombinant DLX1.

Catalog # AT1774a

Product Information

Application	WB, IF, IP, E
Primary Accession	P56177
Other Accession	NM_178120
Reactivity	Human
Host	mouse
Clonality	monoclonal
Isotype	IgG2a Kappa
Clone Names	2H3
Calculated MW	27320

Additional Information

Gene ID	1745
Other Names	Homeobox protein DLX-1, DLX1
Target/Specificity	DLX1 (NP_835221, 152 a.a. ~ 255 a.a) partial recombinant protein with GST tag. MW of the GST tag alone is 26 KDa.
Dilution	WB~~1:500~1000 IF~~1:50~200 IP~~N/A E~~N/A
Format	Clear, colorless solution in phosphate buffered saline, pH 7.2 .
Storage	Store at -20°C or lower. Aliquot to avoid repeated freezing and thawing.
Precautions	DLX1 Antibody (monoclonal) (M01) is for research use only and not for use in diagnostic or therapeutic procedures.

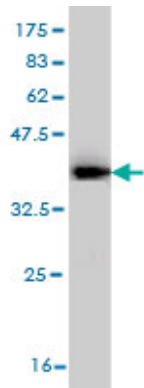
Background

This gene encodes a member of a homeobox transcription factor gene family similar to the *Drosophila* distal-less gene. The encoded protein is localized to the nucleus where it may function as a transcriptional regulator of signals from multiple TGF- β superfamily members. The encoded protein may play a role in the control of craniofacial patterning and the differentiation and survival of inhibitory neurons in the forebrain. This gene is located in a tail-to-tail configuration with another member of the family on the long arm of chromosome 2. Alternatively spliced transcript variants encoding different isoforms have been described.

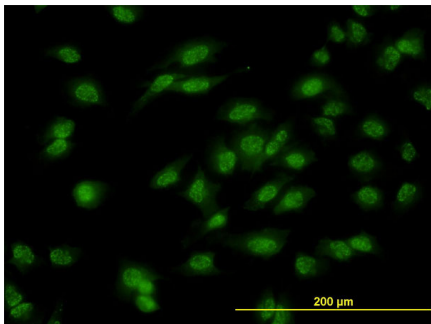
References

1.Upregulation of homeodomain genes, DLX1/2, by FLT3 signaling.Starkova J, Gadgil S, Qiu YH, Zhang N, Hermanova I, Kornblau SM, Drabkin HA.Haematologica. 2011 Feb 28. [Epub ahead of print]

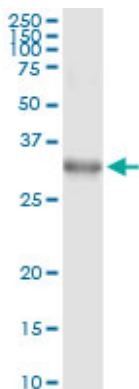
Images



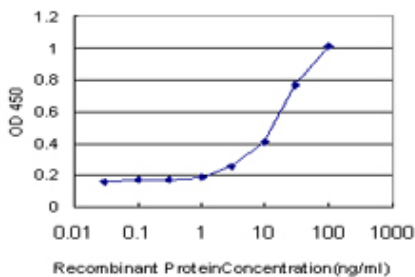
Antibody Reactive Against Recombinant Protein.Western Blot detection against Immunogen (37.55 KDa) .



Immunofluorescence of monoclonal antibody to DLX1 on HeLa cell. [antibody concentration 10 ug/ml]



Immunoprecipitation of DLX1 transfected lysate using anti-DLX1 monoclonal antibody and Protein A Magnetic Bead ([U0007](#)), and immunoblotted with DLX1 MaxPab rabbit polyclonal antibody.



Detection limit for recombinant GST tagged DLX1 is approximately 1ng/ml as a capture antibody.

Please note: All products are 'FOR RESEARCH USE ONLY. NOT FOR USE IN DIAGNOSTIC OR THERAPEUTIC PROCEDURES'.