

DSU Antibody (monoclonal) (M01)

Mouse monoclonal antibody raised against a full length recombinant DSU.

Catalog # AT1823a

Product Information

Application	WB, IP, E
Primary Accession	Q8N565
Other Accession	BC032747
Reactivity	Human
Host	mouse
Clonality	monoclonal
Isotype	IgG1 kappa
Clone Names	8F9-1B2
Calculated MW	24927

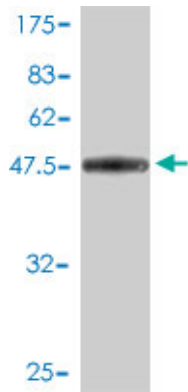
Additional Information

Gene ID	55686
Other Names	Melanoregulin, Dilute suppressor protein homolog, MREG, DSU
Target/Specificity	DSU (AAH32747, 1 a.a. ~ 214 a.a) full-length recombinant protein with GST tag. MW of the GST tag alone is 26 KDa.
Dilution	WB~~1:500~1000 IP~~N/A E~~N/A
Format	Clear, colorless solution in phosphate buffered saline, pH 7.2 .
Storage	Store at -20°C or lower. Aliquot to avoid repeated freezing and thawing.
Precautions	DSU Antibody (monoclonal) (M01) is for research use only and not for use in diagnostic or therapeutic procedures.

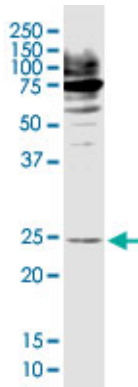
References

Multistudy fine mapping of chromosome 2q identifies XRCC5 as a chronic obstructive pulmonary disease susceptibility gene. Hersh CP, et al. Am J Respir Crit Care Med, 2010 Sep 1. PMID 20463177. Genome-wide association study of alcohol dependence. Treutlein J, et al. Arch Gen Psychiatry, 2009 Jul. PMID 19581569. dsu functions in a MYO5A-independent pathway to suppress the coat color of dilute mice. O'Sullivan TN, et al. Proc Natl Acad Sci U S A, 2004 Nov 30. PMID 15550542. Complete sequencing and characterization of 21,243 full-length human cDNAs. Ota T, et al. Nat Genet, 2004 Jan. PMID 14702039. Generation and initial analysis of more than 15,000 full-length human and mouse cDNA sequences. Strausberg RL, et al. Proc Natl Acad Sci U S A, 2002 Dec 24. PMID 12477932.

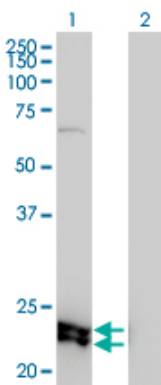
Images



Antibody Reactive Against Recombinant Protein. Western Blot detection against Immunogen (49.28 KDa) .

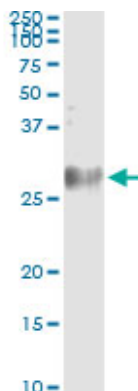


DSU monoclonal antibody (M01), clone 8F9-1B2 Western Blot analysis of DSU expression in MCF-7 ((Cat # AT1823a)



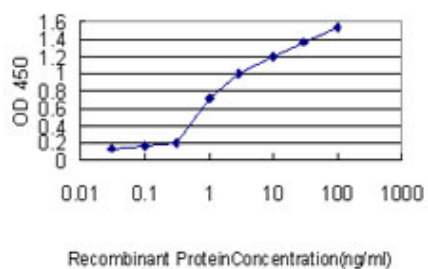
Western Blot analysis of DSU expression in transfected 293T cell line by DSU monoclonal antibody (M01), clone 8F9-1B2.

Lane 1: DSU transfected lysate(25 KDa).
Lane 2: Non-transfected lysate.



Immunoprecipitation of MREG transfected lysate using anti-MREG monoclonal antibody and Protein A Magnetic Bead ([U0007](#)), and immunoblotted with MREG MaxPab rabbit polyclonal antibody.

Detection limit for recombinant GST tagged DSU is approximately 0.03ng/ml as a capture antibody.



Please note: All products are 'FOR RESEARCH USE ONLY. NOT FOR USE IN DIAGNOSTIC OR THERAPEUTIC PROCEDURES'.