

EBF Antibody (monoclonal) (M01)

Mouse monoclonal antibody raised against a full length recombinant EBF1.

Catalog # AT1843a

Product Information

Application	WB
Primary Accession	Q9UH73
Other Accession	BC038805
Reactivity	Human
Host	mouse
Clonality	monoclonal
Isotype	IgG1 Kappa
Clone Names	1C12
Calculated MW	64464

Additional Information

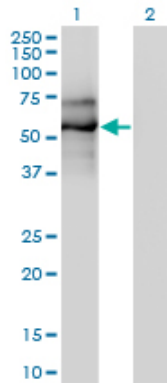
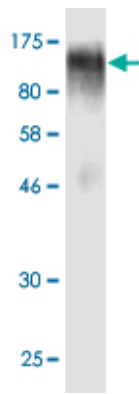
Gene ID	1879
Other Names	Transcription factor COE1, O/E-1, OE-1, Early B-cell factor, EBF1, COE1, EBF
Target/Specificity	EBF1 (AAH38805, 1 a.a. ~ 591 a.a) full-length recombinant protein with GST tag. MW of the GST tag alone is 26 KDa.
Dilution	WB~~1:500~1000
Format	Clear, colorless solution in phosphate buffered saline, pH 7.2 .
Storage	Store at -20°C or lower. Aliquot to avoid repeated freezing and thawing.
Precautions	EBF Antibody (monoclonal) (M01) is for research use only and not for use in diagnostic or therapeutic procedures.

References

1.Early B-Cell Factor-1 (Ebf1) is a key regulator of metabolic and inflammatory signaling pathways in mature adipocytes.Griffin MJ, Zhou Y, Kang S, Zhang X, Mikkelsen TS, Rosen EDJ Biol Chem. 2013 Oct 30.2.Cellular origin and pathophysiology of chronic lymphocytic leukemia.Seifert M, Sellmann L, Bloehdorn J, Wein F, Stilgenbauer S, Durig J, Kuppers R.J Exp Med. 2012 Oct 22. [Epub ahead of print]

Images

Antibody Reactive Against Recombinant Protein.Western Blot detection against Immunogen (90.75 KDa) .



Western Blot analysis of EBF1 expression in transfected 293T cell line by EBF1 monoclonal antibody (M01), clone 1C12.

Lane 1: EBF1 transfected lysate(64 KDa).

Lane 2: Non-transfected lysate.

Please note: All products are 'FOR RESEARCH USE ONLY. NOT FOR USE IN DIAGNOSTIC OR THERAPEUTIC PROCEDURES'.