

EBF Antibody (monoclonal) (M02)

Mouse monoclonal antibody raised against a full length recombinant EBF1.

Catalog # AT1844a

Product Information

Application	WB, E
Primary Accession	Q9UH73
Other Accession	BC038805
Reactivity	Human
Host	mouse
Clonality	monoclonal
Isotype	IgG1 Kappa
Clone Names	1G8
Calculated MW	64464

Additional Information

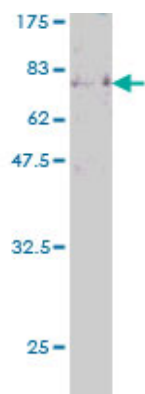
Gene ID	1879
Other Names	Transcription factor COE1, O/E-1, OE-1, Early B-cell factor, EBF1, COE1, EBF
Target/Specificity	EBF1 (AAH38805, 1 a.a. ~ 591 a.a) full-length recombinant protein with GST tag. MW of the GST tag alone is 26 KDa.
Dilution	WB~~1:500~1000 E~~N/A
Format	Clear, colorless solution in phosphate buffered saline, pH 7.2 .
Storage	Store at -20°C or lower. Aliquot to avoid repeated freezing and thawing.
Precautions	EBF Antibody (monoclonal) (M02) is for research use only and not for use in diagnostic or therapeutic procedures.

References

1.The Blk pathway functions as a tumor suppressor in chronic myeloid leukemia stem cells.Zhang H, Peng C, Hu Y, Li H, Sheng Z, Chen Y, Sullivan C, Cerny J, Hutchinson L, Higgins A, Miron P, Zhang X, Brehm MA, Li D, Green MR, Li S.Nat Genet. 2012 Jul 15;44(8):861-71. doi: 10.1038/ng.2350.

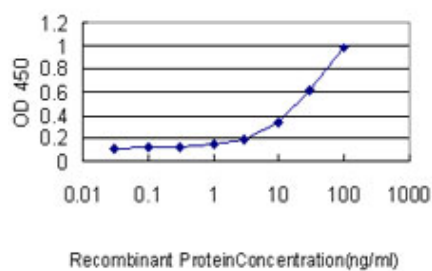
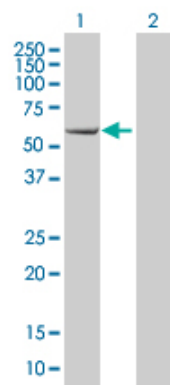
Images

Antibody Reactive Against Recombinant Protein.Western
Blot detection against Immunogen (90.75 KDa) .

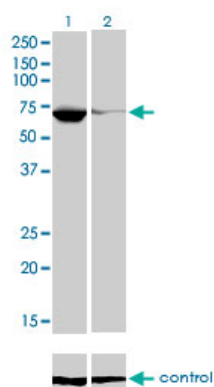


Western Blot analysis of EBF1 expression in transfected 293T cell line by EBF1 monoclonal antibody (M02), clone 1G8.

Lane 1: EBF1 transfected lysate(64 KDa).
Lane 2: Non-transfected lysate.



Detection limit for recombinant GST tagged EBF1 is approximately 0.1ng/ml as a capture antibody.



Western blot analysis of EBF1 over-expressed 293 cell line, cotransfected with EBF1 Validated Chimera RNAi (Cat # AT1844a)

Please note: All products are 'FOR RESEARCH USE ONLY. NOT FOR USE IN DIAGNOSTIC OR THERAPEUTIC PROCEDURES'.