

EBF3 Antibody (monoclonal) (M05)

Mouse monoclonal antibody raised against a partial recombinant EBF3.

Catalog # AT1845a

Product Information

Application	WB, IHC, E
Primary Accession	Q9H4W6
Other Accession	NM_001005463
Reactivity	Human, Mouse
Host	mouse
Clonality	monoclonal
Isotype	IgG1 Kappa
Clone Names	8D6
Calculated MW	64864

Additional Information

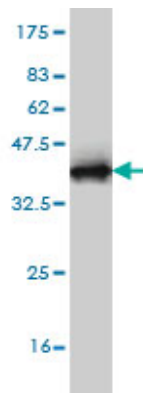
Gene ID	253738
Other Names	Transcription factor COE3, Early B-cell factor 3, EBF-3, Olf-1/EBF-like 2, O/E-2, OE-2, EBF3, COE3
Target/Specificity	EBF3 (NP_001005463, 381 a.a. ~ 480 a.a) partial recombinant protein with GST tag. MW of the GST tag alone is 26 KDa.
Dilution	WB~~1:500~1000 IHC~~1:100~500 E~~N/A
Format	Clear, colorless solution in phosphate buffered saline, pH 7.2 .
Storage	Store at -20°C or lower. Aliquot to avoid repeated freezing and thawing.
Precautions	EBF3 Antibody (monoclonal) (M05) is for research use only and not for use in diagnostic or therapeutic procedures.

References

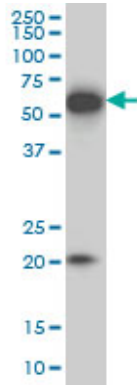
1.Differential effects of a polyalanine tract expansion in Arx on neural development and gene expression.Nasrallah MP, Cho G, Putt ME, Kitamura K, Golden JA.Hum Mol Genet. 2011 Dec 2.

Images

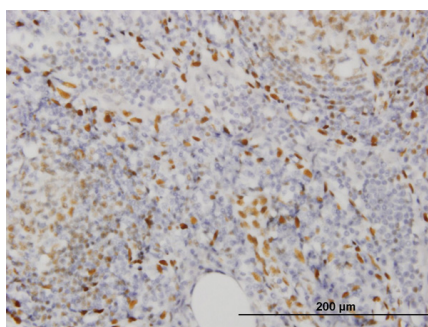
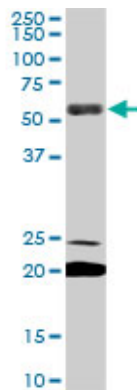
Antibody Reactive Against Recombinant Protein.Western
Blot detection against Immunogen (36.74 KDa) .



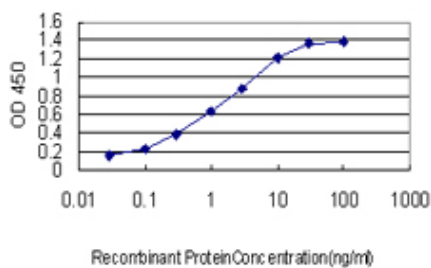
EBF3 monoclonal antibody (M05), clone 8D6 Western Blot analysis of EBF3 expression in IMR-32 ((Cat # AT1845a)



EBF3 monoclonal antibody (M05), clone 8D6. Western Blot analysis of EBF3 expression in NIH/3T3 ((Cat # AT1845a)



Immunoperoxidase of monoclonal antibody to EBF3 on formalin-fixed paraffin-embedded human lymph node. [antibody concentration 0.3 ug/ml]



Detection limit for recombinant GST tagged EBF3 is approximately 0.03ng/ml as a capture antibody.

Please note: All products are 'FOR RESEARCH USE ONLY. NOT FOR USE IN DIAGNOSTIC OR THERAPEUTIC PROCEDURES'.