

EDN1 Antibody (monoclonal) (M01)

Mouse monoclonal antibody raised against a partial recombinant EDN1.

Catalog # AT1850a

Product Information

Application	WB, IP, E
Primary Accession	P05305
Other Accession	BC009720
Reactivity	Human
Host	mouse
Clonality	monoclonal
Isotype	IgG2a kappa
Clone Names	3D6
Calculated MW	24425

Additional Information

Gene ID	1906
Other Names	Endothelin-1, Preproendothelin-1, PPET1, Endothelin-1, ET-1, Big endothelin-1, EDN1
Target/Specificity	EDN1 (AAH09720, 113 a.a. ~ 212 a.a) partial recombinant protein with GST tag. MW of the GST tag alone is 26 KDa.
Dilution	WB~~1:500~1000 IP~~N/A E~~N/A
Format	Clear, colorless solution in phosphate buffered saline, pH 7.2 .
Storage	Store at -20°C or lower. Aliquot to avoid repeated freezing and thawing.
Precautions	EDN1 Antibody (monoclonal) (M01) is for research use only and not for use in diagnostic or therapeutic procedures.

Background

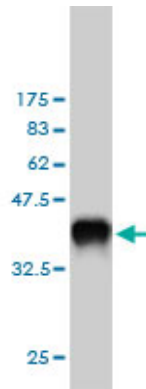
The protein encoded by this gene is proteolytically processed to release a secreted peptide termed endothelin 1. This peptide is a potent vasoconstrictor and is produced by vascular endothelial cells. Endothelin 1 also can affect the central nervous system. Two transcript variants encoding different isoforms have been found for this gene.

References

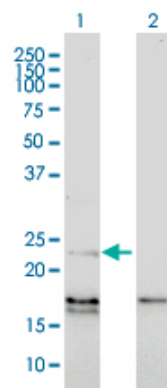
1.Calpain-6 is an endothelin-1 signaling dependent protective factor in chemoresistant osteosarcoma.Marion A, Dieudonne FX, Patino-Garcia A, Lecanda F, Marie PJ, Modrowski D.Int J Cancer. 2012

Jun 1;130(11):2514-25. doi: 10.1002/ijc.26246. Epub 2011 Aug 16.2.Endothelin type A and B receptors in the control of afferent and efferent arterioles in mice.Schildroth J, Rettig-Zimmermann J, Kalk P, Steege A, Fahling M, Sendeski M, Paliege A, Lai EY, Bachmann S, Persson PB, Hoher B, Patzak A.Nephrol Dial Transplant. 2010 Sep 2. [Epub ahead of print]3.Epithelial-to-Mesenchymal Transition and Resistance to Ingenol 3-Angelate, a Novel Protein Kinase C Modulator, in Colon Cancer Cells.Ghoul A, Serova M, Astorgues-Xerri L, Bieche I, Bousquet G, Varna M, Vidaud M, Phillips E, Weill S, Benhadji KA, Lokiec F, Cvitkovic E, Faivre S, Raymond E.Cancer Res. 2009 May 15;69(10):4260-9. Epub 2009 May 5.

Images

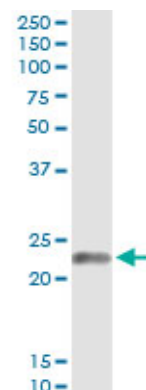


Antibody Reactive Against Recombinant Protein.Western Blot detection against Immunogen (36.63 KDa) .

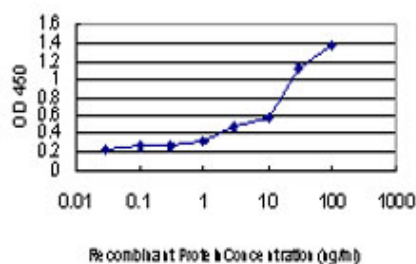


Western Blot analysis of EDN1 expression in transfected 293T cell line by EDN1 monoclonal antibody (M01), clone 3D6.

Lane 1: EDN1 transfected lysate(24 KDa).
Lane 2: Non-transfected lysate.



Immunoprecipitation of EDN1 transfected lysate using anti-EDN1 monoclonal antibody and Protein A Magnetic Bead ([U0007](#)), and immunoblotted with EDN1 MaxPab rabbit polyclonal antibody.



Detection limit for recombinant GST tagged EDN1 is approximately 0.3ng/ml as a capture antibody.

Please note: All products are 'FOR RESEARCH USE ONLY. NOT FOR USE IN DIAGNOSTIC OR THERAPEUTIC PROCEDURES'.