

EDN2 Antibody (monoclonal) (M01)

Mouse monoclonal antibody raised against a full length recombinant EDN2.

Catalog # AT1851a

Product Information

Application	WB
Primary Accession	P20800
Other Accession	BC034393
Reactivity	Human
Host	mouse
Clonality	monoclonal
Isotype	IgG2b kappa
Clone Names	3B4-1C5
Calculated MW	19960

Additional Information

Gene ID	1907
Other Names	Endothelin-2, ET-2, Preproendothelin-2, PPET2, EDN2
Target/Specificity	EDN2 (AAH34393, 1 a.a. ~ 178 a.a) full-length recombinant protein with GST tag. MW of the GST tag alone is 26 KDa.
Dilution	WB~~1:500~1000
Format	Clear, colorless solution in phosphate buffered saline, pH 7.2 .
Storage	Store at -20°C or lower. Aliquot to avoid repeated freezing and thawing.
Precautions	EDN2 Antibody (monoclonal) (M01) is for research use only and not for use in diagnostic or therapeutic procedures.

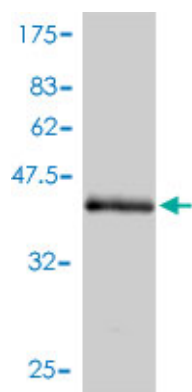
Background

This gene encodes a member of the endothelin protein family of secretory vasoconstrictive peptides. The preproprotein is processed to a short mature form which functions as a ligand for the endothelin receptors that initiate intracellular signaling events. This gene product is involved in a wide range of biological processes, such as hypertension and ovulation.

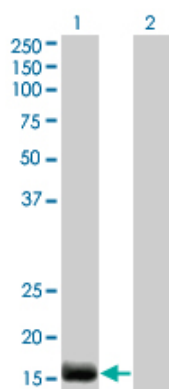
References

1.Estrogen and progesterone regulate expression of the endothelins in the rhesus macaque endometrium.Keator CS, Mah K, Ohm L, Slayden OD.Hum Reprod. 2011 Apr 19. [Epub ahead of print]

Images



Antibody Reactive Against Recombinant Protein. Western Blot detection against Immunogen (45.32 KDa) .



Western Blot analysis of EDN2 expression in transfected 293T cell line by EDN2 monoclonal antibody (M01), clone 3B4-1C5.

Lane 1: EDN2 transfected lysate(20 KDa).

Lane 2: Non-transfected lysate.

Please note: All products are 'FOR RESEARCH USE ONLY. NOT FOR USE IN DIAGNOSTIC OR THERAPEUTIC PROCEDURES'.