

EEF1B2 Antibody (monoclonal) (M10)

Mouse monoclonal antibody raised against a partial recombinant EEF1B2.

Catalog # AT1855a

Product Information

Application	WB
Primary Accession	P24534
Other Accession	NM_001959.3
Reactivity	Human
Host	mouse
Clonality	monoclonal
Isotype	IgG2a Kappa
Clone Names	3A5
Calculated MW	24764

Additional Information

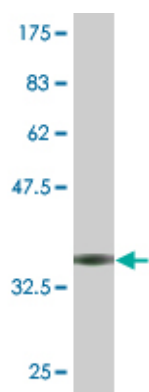
Gene ID	1933
Other Names	Elongation factor 1-beta, EF-1-beta, EEF1B2, EEF1B, EF1B
Target/Specificity	EEF1B2 (NP_001950.1, 29 a.a. ~ 91 a.a) partial recombinant protein with GST tag. MW of the GST tag alone is 26 KDa.
Dilution	WB~~1:500~1000
Format	Clear, colorless solution in phosphate buffered saline, pH 7.2 .
Storage	Store at -20°C or lower. Aliquot to avoid repeated freezing and thawing.
Precautions	EEF1B2 Antibody (monoclonal) (M10) is for research use only and not for use in diagnostic or therapeutic procedures.

Background

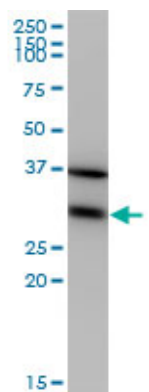
This gene encodes a translation elongation factor. The protein is a guanine nucleotide exchange factor involved in the transfer of aminoacylated tRNAs to the ribosome. Alternative splicing results in three transcript variants which differ only in the 5' UTR. [provided by RefSeq]

Images

Antibody Reactive Against Recombinant Protein.Western Blot detection against Immunogen (32.56 KDa) .



EEF1B2 monoclonal antibody (M10), clone 3A5. Western Blot analysis of EEF1B2 expression in HeLa (Cat # AT1855a)



Please note: All products are 'FOR RESEARCH USE ONLY. NOT FOR USE IN DIAGNOSTIC OR THERAPEUTIC PROCEDURES'.