

EEF1D Antibody (monoclonal) (M04)

Mouse monoclonal antibody raised against a partial recombinant EEF1D.

Catalog # AT1856a

Product Information

Application	WB, IF, E
Primary Accession	P29692
Other Accession	NM_032378
Reactivity	Human
Host	mouse
Clonality	monoclonal
Isotype	IgG2a Kappa
Clone Names	4B12
Calculated MW	31122

Additional Information

Gene ID	1936
Other Names	Elongation factor 1-delta, EF-1-delta, Antigen NY-CO-4, EEF1D, EF1D
Target/Specificity	EEF1D (NP_115754, 1 a.a. ~ 91 a.a) partial recombinant protein with GST tag. MW of the GST tag alone is 26 KDa.
Dilution	WB~~1:500~1000 IF~~1:50~200 E~~N/A
Format	Clear, colorless solution in phosphate buffered saline, pH 7.2 .
Storage	Store at -20°C or lower. Aliquot to avoid repeated freezing and thawing.
Precautions	EEF1D Antibody (monoclonal) (M04) is for research use only and not for use in diagnostic or therapeutic procedures.

Background

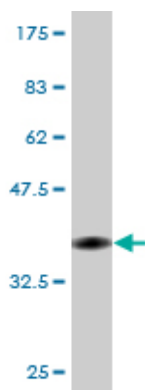
This gene encodes a subunit of the elongation factor-1 complex, which is responsible for the enzymatic delivery of aminoacyl tRNAs to the ribosome. This subunit, delta, functions as guanine nucleotide exchange factor. It is reported that following HIV-1 infection, this subunit interacts with HIV-1 Tat. This interaction results in repression of translation of host cell proteins and enhanced translation of viral proteins. Several alternatively spliced transcript variants encoding multiple isoforms have been found for this gene. Related pseudogenes have been defined on chromosomes 1, 6, 7, 9, 11, 13, 17, 19.

References

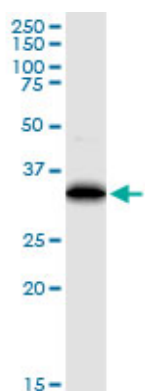
Alternative expression and sequence of human elongation factor-1 delta during malignant transformation of

human bronchial epithelial cells induced by cadmium chloride. Lei YX, et al. Biomed Environ Sci, 2010 Apr. PMID 20514991. BMP-6 promotes E-cadherin expression through repressing deltaEF1 in breast cancer cells. Yang S, et al. BMC Cancer, 2007 Nov 13. PMID 17997862. Large-scale mapping of human protein-protein interactions by mass spectrometry. Ewing RM, et al. Mol Syst Biol, 2007. PMID 17353931. Global, in vivo, and site-specific phosphorylation dynamics in signaling networks. Olsen JV, et al. Cell, 2006 Nov 3. PMID 17081983. Medulloblastoma outcome is adversely associated with overexpression of EEF1D, RPL30, and RPS20 on the long arm of chromosome 8. De Bortoli M, et al. BMC Cancer, 2006 Sep 12. PMID 16968546.

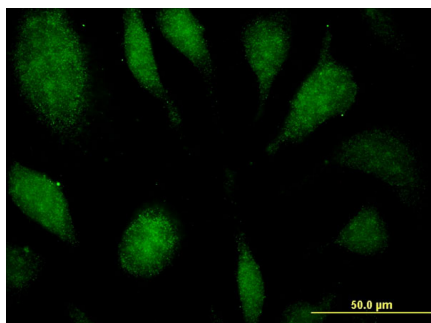
Images



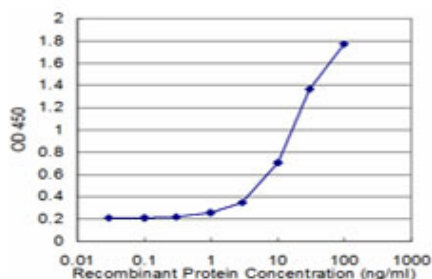
Antibody Reactive Against Recombinant Protein. Western Blot detection against Immunogen (35.75 KDa) .



EEF1D monoclonal antibody (M04), clone 4B12. Western Blot analysis of EEF1D expression in human pancreas.



Immunofluorescence of monoclonal antibody to EEF1D on HeLa cell . [antibody concentration 10 ug/ml]



Detection limit for recombinant GST tagged EEF1D is approximately 1ng/ml as a capture antibody.

Please note: All products are 'FOR RESEARCH USE ONLY. NOT FOR USE IN DIAGNOSTIC OR THERAPEUTIC PROCEDURES'.