

EFHD1 Antibody (monoclonal) (M05)

Mouse monoclonal antibody raised against a full length recombinant EFHD1.

Catalog # AT1858a

Product Information

Application	WB, IHC, IF
Primary Accession	Q9BUP0
Other Accession	NM_025202
Reactivity	Human, Mouse, Rat
Host	mouse
Clonality	monoclonal
Isotype	IgG2a Kappa
Clone Names	1H7
Calculated MW	26928

Additional Information

Gene ID	80303
Other Names	EF-hand domain-containing protein D1, EF-hand domain-containing protein 1, Swiprosin-2, EFHD1, SWS2
Target/Specificity	EFHD1 (NP_079478.1, 168 a.a. ~ 238 a.a) full-length recombinant protein with GST tag. MW of the GST tag alone is 26 KDa.
Dilution	WB~~1:500~1000 IHC~~1:100~500 IF~~1:50~200
Format	Clear, colorless solution in phosphate buffered saline, pH 7.2 .
Storage	Store at -20°C or lower. Aliquot to avoid repeated freezing and thawing.
Precautions	EFHD1 Antibody (monoclonal) (M05) is for research use only and not for use in diagnostic or therapeutic procedures.

Background

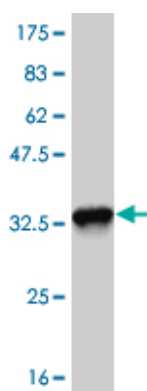
EFHD1 is an EF-hand domain-containing protein that displays increased expression during neuronal differentiation (Tominaga and Tomooka, 2002 [PubMed 12270117]).

References

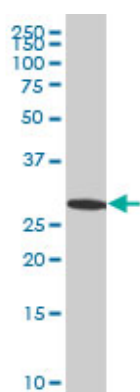
Large-scale mapping of human protein-protein interactions by mass spectrometry. Ewing RM, et al. Mol Syst Biol, 2007. PMID 17353931. Large-scale cDNA transfection screening for genes related to cancer development and progression. Wan D, et al. Proc Natl Acad Sci U S A, 2004 Nov 2. PMID 15498874. The status, quality, and expansion of the NIH full-length cDNA project: the Mammalian Gene Collection (MGC).

Gerhard DS, et al. Genome Res, 2004 Oct. PMID 15489334. Complete sequencing and characterization of 21,243 full-length human cDNAs. Ota T, et al. Nat Genet, 2004 Jan. PMID 14702039. Generation and initial analysis of more than 15,000 full-length human and mouse cDNA sequences. Strausberg RL, et al. Proc Natl Acad Sci U S A, 2002 Dec 24. PMID 12477932.

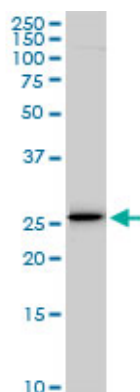
Images



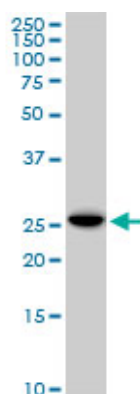
Antibody Reactive Against Recombinant Protein. Western Blot detection against Immunogen (33.44 kDa) .



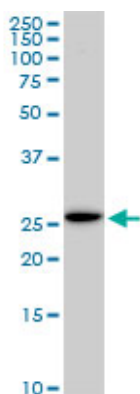
EFHD1 monoclonal antibody (M05), clone 1H7 Western Blot analysis of EFHD1 expression in HeLa (Cat # AT1858a)



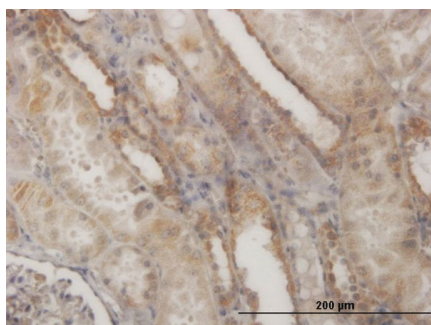
EFHD1 monoclonal antibody (M05), clone 1H7. Western Blot analysis of EFHD1 expression in PC-12 (Cat # AT1858a)



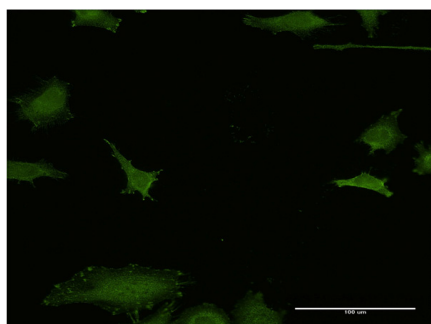
EFHD1 monoclonal antibody (M05), clone 1H7. Western Blot analysis of EFHD1 expression in Raw 264.7 (Cat # AT1858a)



EFHD1 monoclonal antibody (M05), clone 1H7. Western Blot analysis of EFHD1 expression in NIH/3T3((Cat # AT1858a)



Immunoperoxidase of monoclonal antibody to EFHD1 on formalin-fixed paraffin-embedded human kidney. [antibody concentration 3 ug/ml]



Immunofluorescence of monoclonal antibody to EFHD1 on HeLa cell . [antibody concentration 10 ug/ml]

Please note: All products are 'FOR RESEARCH USE ONLY. NOT FOR USE IN DIAGNOSTIC OR THERAPEUTIC PROCEDURES'.